



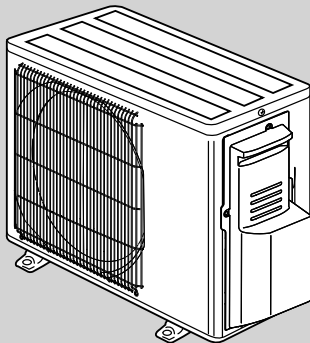
SPLIT-TYPE AIR CONDITIONERS

OUTDOOR UNIT PARTS CATALOG

No. OBB753

Models

- MUFZ-KJ09NAHZ** - U1
- MUFZ-KJ12NAHZ** - U1
- MUFZ-KJ15NAHZ** - U1
- MUFZ-KJ18NAHZ** - U1



MUFZ-KJ09NAHZ
MUFZ-KJ12NAHZ

CONTENTS

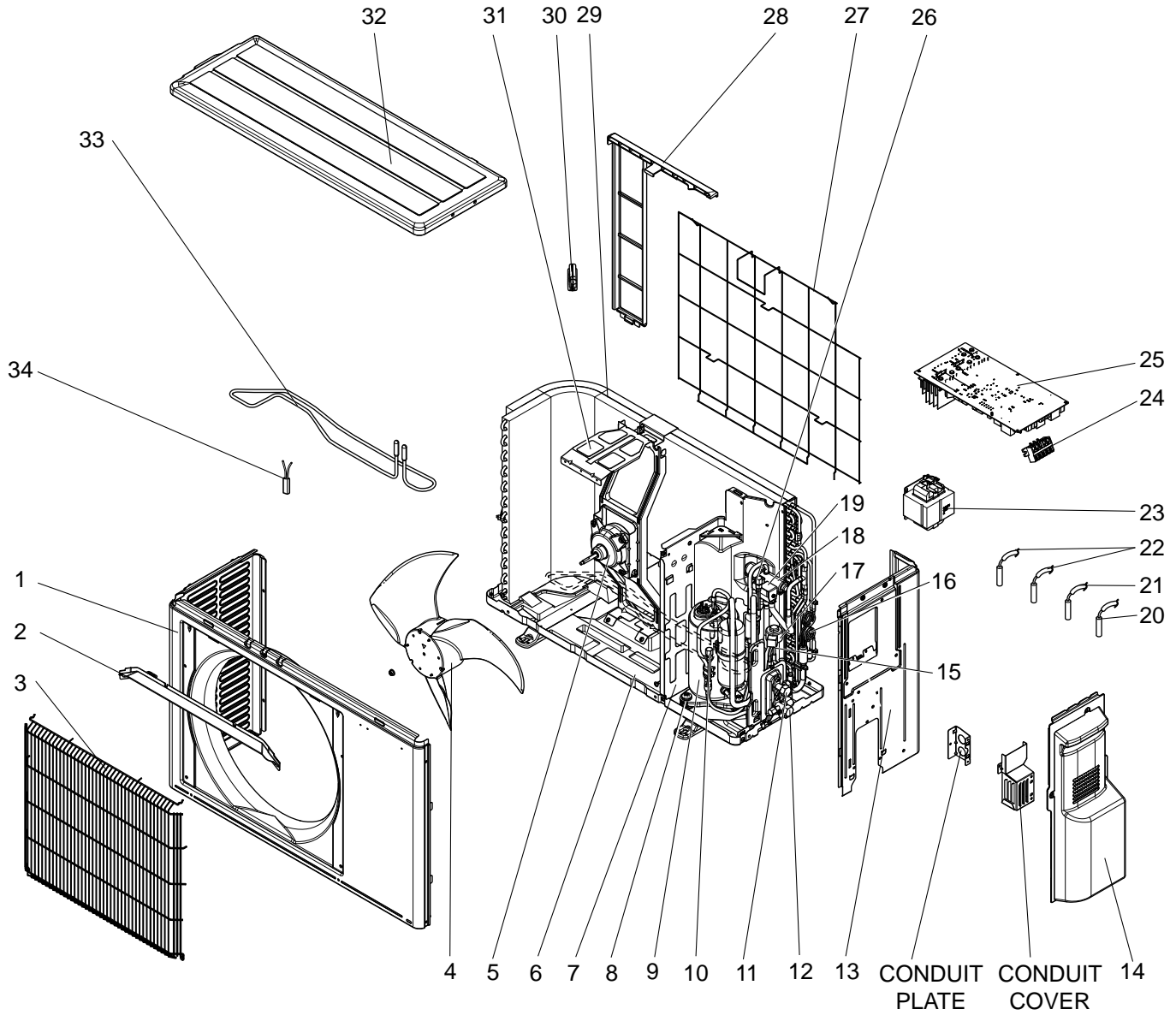
- 1. RoHS PARTS LIST..... 2

SERVICE MANUAL (OBH753)

NOTE:
RoHS compliant products have <G> mark on the spec name plate.

MUFZ-KJ09NAHZ MUFZ-KJ12NAHZ

1-1. OUTDOOR UNIT STRUCTURAL PARTS, ELECTRICAL PARTS AND FUNCTIONAL PARTS



RoHS PARTS LIST

1-1. OUTDOOR UNIT STRUCTURAL PARTS AND FUNCTIONAL PARTS

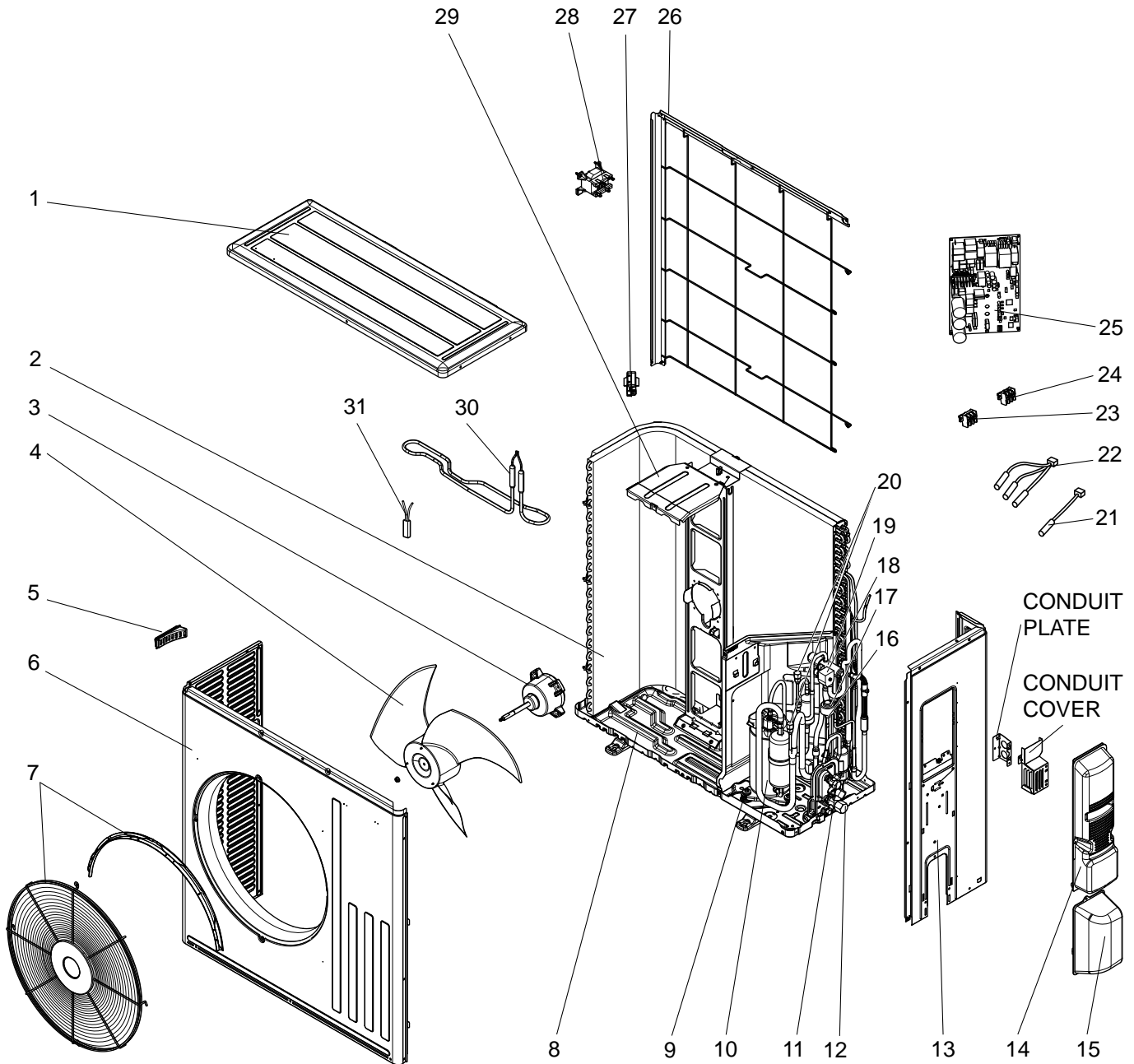
Part number that is circled is not shown in the illustration.

No.	RoHS	Part No.	Part Name	Symbol in Wiring Diagram	Q'ty/unit		Remarks
					MUFZ-KJ		
					09NAHZ	12NAHZ	
1	G	U01 A01 232	CABINET		1	1	
2	G	U01 A01 531	ICE GUARD		1	1	
3	G	U01 A01 521	GRILLE (OUT)		1	1	
4	G	U01 A01 501	PROPELLER FAN		1	1	
5	G	U01 A01 301	OUTDOOR FAN MOTOR	MF	1	1	RC0J55-□□
6	G	U01 A01 290	BASE		1	1	
7	G	U01 A01 293	SEPARATOR		1	1	
8	G	U01 A01 506	COMP. RUBBER SET		3	3	3 RUBBERS/SET
9	G	U01 A02 900	COMPRESSOR (SNB140FQUMT)	MC	1	1	SNB140FQUMT
10	G	U01 A01 641	SERVICE PORT (L)		1	1	
11	G	U01 A01 662	STOP VALVE (LIQ)		1	1	ø3/8 (ø9.52)
12	G	U01 A01 661	STOP VALVE (GAS)		1	1	ø1/4 (ø6.35)
13	G	U01 A01 233	BACK PANEL (OUT)		1	1	
14	G	U01 A01 245	SERVICE PANEL		1	1	
15	G	U01 A01 640	EXPANSION VALVE		1	1	
16	G	U01 A01 936	CAPILLARY TUBE		4	4	O.D. 0.118 × I.D. 0.079 × 8-9/32 (ø3.0 × ø2.0 × 210)
17	G	U01 A01 493	EXPANSION VALVE COIL	LEV	1	1	
18	G	U01 A01 961	4-WAY VALVE		1	1	
19	G	U01 A01 490	R.V. COIL	21S4	1	1	
20	G	U01 A02 308	THERMISTOR AMBIENT TEMP. TEMPERATURE	RT65	1	1	
21	G	U01 A02 307	OUTDOOR HEAT EXC. TEMP THERMISTOR	RT68	1	1	
22	G	U01 A01 306	THERMISTOR SET	RT61, RT62	1	1	DEFROST, DISCHARGE
23	G	U01 A01 337	REACTOR	L61	1	1	
24	G	U01 A01 374	TERMINAL BLOCK	TB	1	1	5 P
25	G	U01 A18 451	INVERTER P.C. BOARD		1	1	Including heat sink and RT64
	G	U01 A19 451					
26	G	U01 A02 641	SERVICE PORT (H)		1	1	
27	G	U01 A01 525	CONDENSER WIRE NET		1	1	
28	G	U01 A01 523	CONDENSER NET		1	1	
29	G	U01 A01 630	OUTDOOR HEAT EXCHANGER		1	1	
30	G	U01 A01 079	THERMO HOLDER		1	1	
31	G	U01 A01 515	MOTOR SUPPORT		1	1	
32	G	U01 A01 297	TOP PANEL		1	1	
33	G	U01 A01 526	DEFROST HEATER	H	1	1	Including lead assembly
34	G	U01 A01 381	HEATER PROTECTOR	26H	1	1	
(35)	G	U01 A02 936	CAPILLARY TUBE		1	1	O.D. 0.157 × I.D. 0.094 × 9-7/16 (ø4.0 × ø2.4 × 240)

RoHS PARTS LIST

MUFZ-KJ15NAHZ MUFZ-KJ18NAHZ

1-2. OUTDOOR UNIT STRUCTURAL PARTS, ELECTRICAL PARTS AND FUNCTIONAL PARTS



RoHS PARTS LIST

1-2. OUTDOOR UNIT STRUCTURAL PARTS, ELECTRICAL PARTS AND FUNCTIONAL PARTS

Part numbers that are circled are not shown in the illustration.

No.	RoHS	Part No.	Part Name	Symbol in Wiring Diagram	Q'ty/unit		Remarks	
					MUFZ-KJ			
					15NAHZ	18NAHZ		
1	G	E12 L87 297	TOP PANEL			1	1	
2	G	E12 T44 630	OUTDOOR HEAT EXCHANGER			1	1	
3	G	E12 F76 301	OUTDOOR FAN MOTOR	MF		1	1	RC0J77-□□
4	G	E12 F28 501	PROPELLER FAN			1	1	
5	G	E12 817 009	HANDLE			1	1	
6	G	E12 L87 232	CABINET			1	1	
7	G	E12 L87 521	FAN GUARD			1	1	Including ice guard
8	G	E12 H25 290	BASE			1	1	
9	G	E12 C34 506	COMPRESSOR RUBBER SET			3	3	3 RUBBERS/SET
10	G	E12 F76 900	COMPRESSOR (SNB172FQKMT)	MC		1	1	SNB172FQKMT
11	G	E12 L87 662	STOP VALVE (LIQ)			1	1	ø1/4 (ø6.35)
12	G	E12 L87 661	STOP VALVE (GAS)			1	1	ø1/2 (ø12.7)
13	G	E12 L87 233	BACK PANEL (OUT)			1	1	
14	G	E12 L87 245	SERVICE PANEL			1	1	
15	G	E12 F28 650	VALVE COVER			1	1	
16	G	E12 851 640	EXPANSION VALVE			1	1	
17	G	E12 F28 493	EXPANSION VALVE COIL	LEV		1	1	
18	G	E12 F76 490	R.V. COIL	21S4		1	1	
19	G	E12 A56 961	4-WAY VALVE			1	1	
20	G	E12 E79 641	SERVICE PORT (H, L)			2	2	
21	G	E12 J52 309	AMBIENT TEMPERATURE THERMISTOR	RT65		1	1	
22	G	E12 F28 308	THERMISTOR SET	RT61, RT62, RT68		1	1	DEFROST, DISCHARGE, OUTDOOR HEAT EXCHANGER TEMPERATURE
23	G	E12 L87 374	TERMINAL BLOCK	TB1		1	1	3 P
24	G	E12 T16 374	TERMINAL BLOCK	TB2		1	1	3 P
25	G	E12 X52 451	INVERTER P.C. BOARD			1		Including heat sink and RT64
	G	E12 X53 451					1	
26	G	E12 L87 523	CONDENSER NET			1	1	
27	G	E12 F76 079	THERMO HOLDER			1	1	
28	G	E12 F28 337	REACTOR	L		1	1	
29	G	E12 J52 515	MOTOR SUPPORT			1	1	
30	G	E12 J52 526	DEFROST HEATER	H		1	1	
31	G	E12 J52 381	HEATER PROTECTOR	26H		1	1	
③②	G	E17 250 382	FUSE	F65, F66		2	2	T6.3AL250V
③③	G	E17 001 241	FUSE HOLDER			2	2	
③④	G	E12 527 936	CAPILLARY TUBE			1	1	O.D. 0.157 × I.D. 0.094 × 3-15/16 (ø4.0 × ø2.4 × 100)

mitsubishi electric corporation

HEAD OFFICE: TOKYO BLDG., 2-7-3, MARUNOUCHI, CHIYODA-KU, TOKYO 100-8310, JAPAN

© Copyright 2016 MITSUBISHI ELECTRIC CORPORATION
Distributed in Feb. 2016. No. OBB753
Made in Japan

New publication, effective Feb. 2016
Specifications are subject to change without notice.