

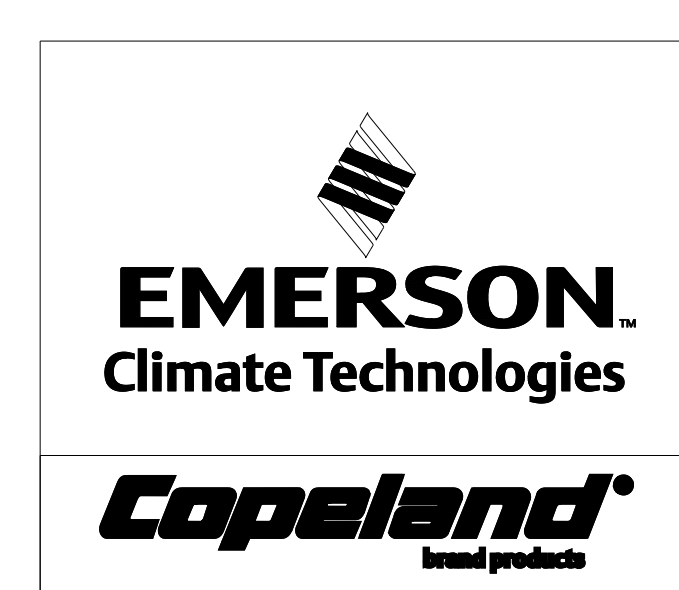
PART NUMBER	A	B	C
497-3831-00	14.174	12.315	11.285
497-3831-01	13.924	12.065	11.035
497-3831-02	13.924	12.065	11.035
497-3831-03	13.674	11.815	10.785
497-3831-04	13.674	11.815	10.785
497-3831-05	14.424	12.565	11.535
497-3831-06	12.924	11.065	10.035
497-3831-07	13.054	11.195	10.165
497-3831-08	13.174	11.315	10.285
497-3831-09	13.174	11.315	10.285
497-3831-10	13.424	11.565	10.535
497-3831-11	13.424	11.565	10.535
497-3831-12	12.804	10.945	9.915
497-3831-13	12.674	10.815	9.785
497-3831-14	14.174	12.315	11.285
497-3831-15	13.924	12.065	11.035
497-3831-16	13.924	12.065	11.035
497-3831-17	13.674	11.815	10.785
497-3831-18	13.674	11.815	10.785
497-3831-19	14.424	12.565	11.535
497-3831-20	12.924	11.065	10.035
497-3831-21	13.054	11.195	10.165
497-3831-22	13.174	11.315	10.285
497-3831-23	13.424	11.565	10.535
497-3831-24	12.804	10.945	9.915

MODEL/PART CROSS REF				
MODEL NUMBER	PART NUMBER FOR SE -875	PART NUMBER FOR SE -775		
CR42K6-PFV	497-3831-00	497-3831-14		
CR42K6-TFD				
CR42K6-TFE				
CR42K6-TF5				
CR42K6E-PFV				
CR42K6E-TFD				
CR42K6E-TFE				
CR42K6E-TF5				
CR38K6-PFV			497-3831-01	497-3831-15
CR38K6-TFD				
CR38K6-TFE				
CR38K6-TF5				
CR38K6E-PFV				
CR38K6E-TFD				
CR38K6E-TFE				
CR38K6E-TF5				
CR38K6-PFZ	497-3831-02	--		
CR36K6-PFZ				
CR36K6E-PFZ	--	497-3831-16		
CR34K6-PFV	497-3831-03	497-3831-17		
CR35K6-PFV				
CR35K6-TFD				
CR35K6-TFE				
CR35K6-TF5				
CR34K6E-PFV				
CR35K6E-PFV				
CR35K6E-TFE				
CR35K6E-TF5				
CR35K6E-TFD				
CR32K6E-PFZ	--	497-3831-18		
CR32K6-PFZ	497-3831-04	--		
CR34K6E-PFZ				
CR34K6-PFZ	497-3831-05	497-3831-19		
CR42K6-PFZ				
CR42K6E-PFZ	497-3831-06	497-3831-20		
CR18K6-TFD				
CR18K6-TF5				
CR22K6-PFJ				
CR22K6-TFD				
CR22K6-TF5				
CR18K6E-TFD				
CR18K6E-TF5				
CR22K6E-PFJ				
CR22K6E-TFD				
CR22K6E-TF5				
CR24K6-PFJ	497-3831-07	497-3831-21		
CR24K6-PFV				
CR24K6-TFD				
CR24K6-TF5				
CR24K6E-PFJ				
CR24K6E-PFV				
CR24K6E-TFD				
CR24K6E-TF5				

MODEL/PART CROSS REF				
MODEL NUMBER	PART NUMBER FOR SE -875	PART NUMBER FOR SE -775		
CR28K6-PFJ	497-3831-08	497-3831-22		
CR28K6-PFV				
CR28K6-TFD				
CR28K6-TF5				
CR28K6E-PFJ				
CR28K6E-PFV				
CR28K6E-TFD				
CR28K6E-TF5				
CR24K6-PFZ			497-3831-09	--
CR34K6-TFM				
CR30K6-PFJ	497-3831-10	497-3831-23		
CR30K6-PFV				
CR30K6-TFD				
CR30K6-TF5				
CR32K6-PFJ				
CR32K6-PFV				
CR32K6-TFD				
CR32K6-TFE				
CR32K6-TF5				
CR30K6E-PFJ				
CR30K6E-PFV				
CR30K6E-TFD				
CR30K6E-TF5				
CR32K6E-PFJ				
CR32K6E-PFV				
CR32K6E-TFD				
CR32K6E-TF5				
CR32K6E-TFE	--	--		
CR28K6-PFZ	497-3831-11	--		
CR16K6-PFJ	497-3831-12	497-3831-24		
CR16K6-PFV				
CR18K6-PFJ				
CR18K6-PFV				
CR20K6-PFV				
CR22K6-PFV				
CR16K6E-PFJ				
CR16K6E-PFV				
CR18K6E-PFJ				
CR18K6E-PFV				
CR20K6E-PFV				
CR22K6E-PFV				
CR14K6-PFV	497-3831-13	--		
CR14K6E-PFV				

SPECIFICATIONS	
ES NO.	DESCRIPTION
ES22-122	PACKAGING
ES81-159	CLEANLINESS
ES81-250	IDENTIFICATION
ES92-167	REGULATORY COMPLIANCE

- NOTES:
- TOLERANCES TO BE ±0.12 UNLESS OTHERWISE SPECIFIED.
 - TUBE ENDS MUST BE PLUGGED.
 - FOR MODEL APPLICATION REFER TO CHART
 - MODEL SE INCLUDES MOLDED PLUG CABLE ASSEMBLY
 - MODEL SE INCLUDES GROUNDING SCREW
 - POWER CABLE/CONDUIT CABLE READY ASSM KIT P/N 998-0529-04 ITEM ORDERED SEPERATE OF COMPRESSOR MODEL.
 - ROTALOCK SERVICE VALVE SUCTION PORT KITS:
P/N 998-0510-90 FOR 3/4" - ID CUSTOMER CONNECTION OR P/N 998-0510-69 FOR 5/8" - ID CUSTOMER CONNECTION
ITEMS ORDERED SEPERATE OF COMPRESSOR MODEL.
 - CRANKCASE HEATERS WITH CONDUIT READY BOX & CABLES
FOR PFJ/PFV/PFZ/TF5 USE:
918-0076-02 FOR TFD/TFE/TFM USE:
918-0076-03
ITEMS ORDERED SEPERATE OF COMPRESSOR MODEL.
 - REPLACE THE FILTER DRYER WITH BKF-163S OR EQUIVALENT FOR ITEM THAT IS REQUIRED FOR YOUR UNIT.



INTERPRET PER ASME Y14.5M-1994 AND EMERSON CLIMATE TECHNOLOGIES, INC. DESIGN STANDARDS DS2002 DO NOT SCALE DRAWING

THIRD ANGLE PROJECTION

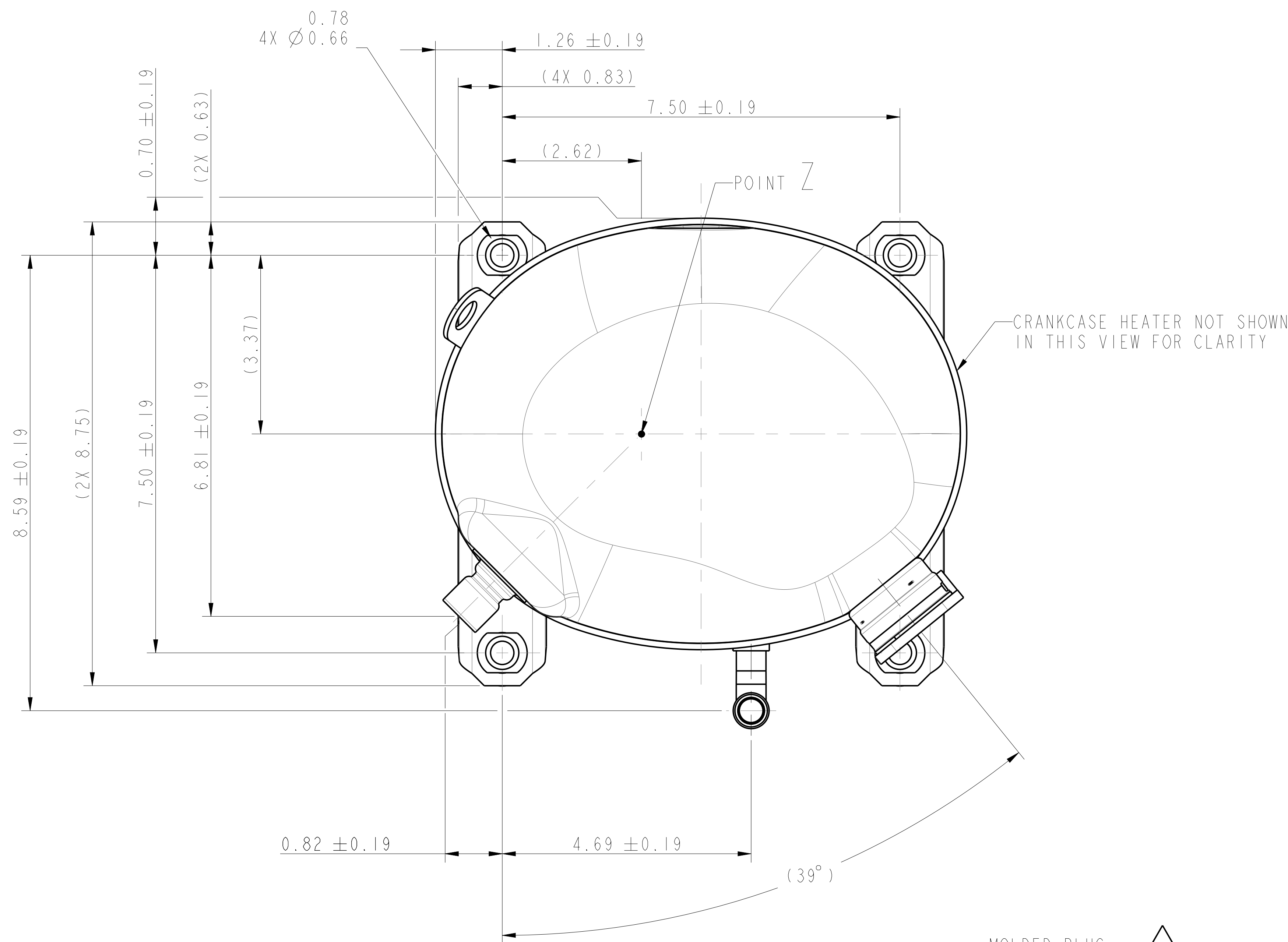
CRITICAL PRODUCT CHARACTERISTIC

UNLESS OTHERWISE SPECIFIED DIMENSIONS ARE INCH OR (MILLIMETER)

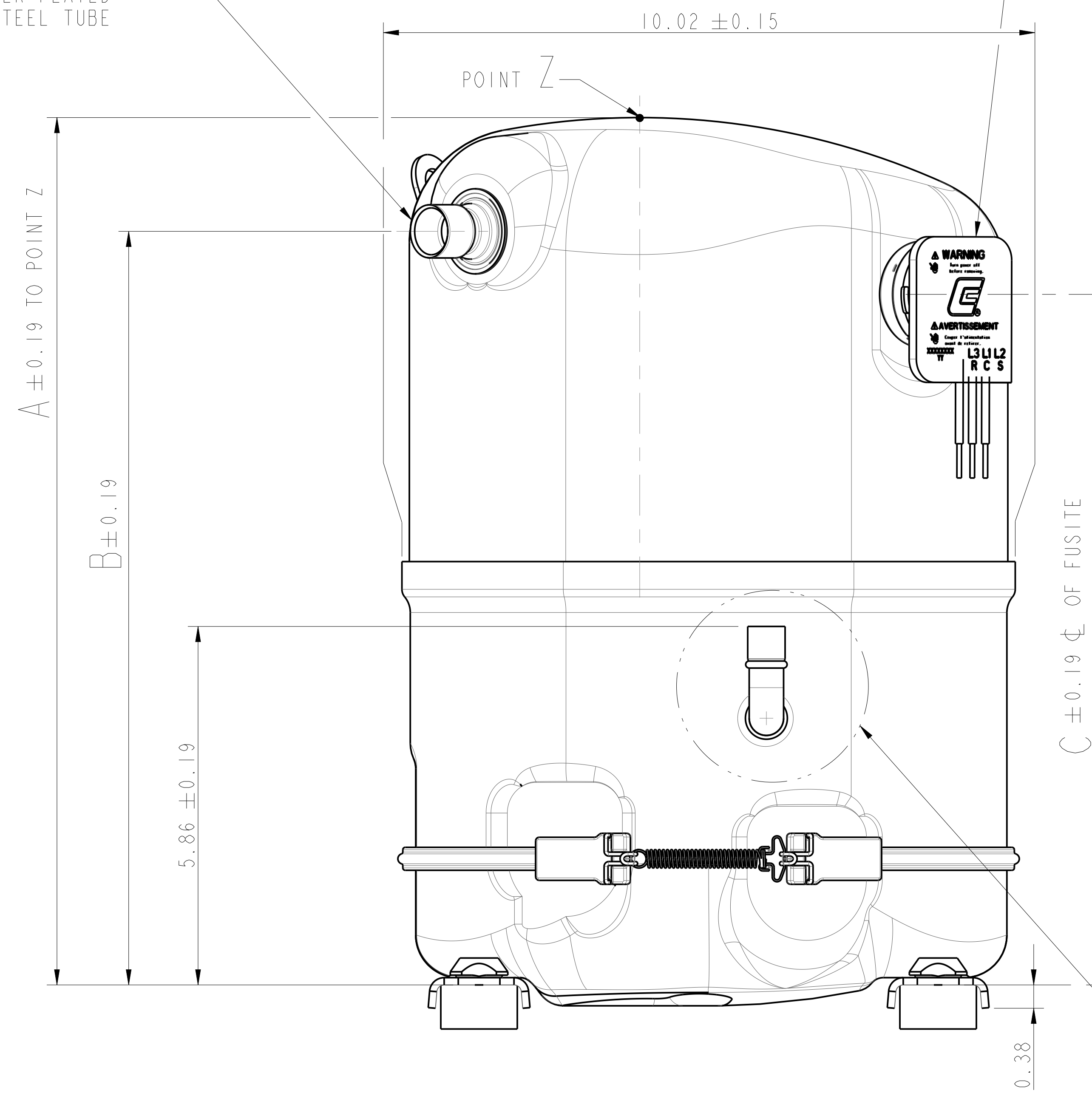
TOLERANCES:
2-PLACE ± N/A
3-PLACE ± N/A
ANGULAR ± N/A

ECN301692	5	ASSIGNED 497-3831-05 TO CR42K6E-PFZ-B15 MODEL IN TABLE	04-10-17	SAS	BAH	EJT
ECN007772	4	MOVED CR35K6E-TFD	11-15-13	PAS	BAH	EJT
ECN007772	3	UPDATED MODEL NUMBER TABLE	10-24-13	PAS	BAH	EJT
ECN007040	2	ADDED CR34K6E-PFZ & CR38K6E-PFZ MODELS	04-16-13	PAS	BAH	EJT
ECN006139	1	UPDATED MODEL TABLE	08-28-12	AMJ	PNA	PNA
ECN004534	0	RELEASED	10-05-11	KRB	BAH	EJT
ENG NOTICE NO.	REV. NO.	REVISIONS	DATE	BY	CHKD	APPR
CONFIDENTIALITY NOTICE						
THIS DRAWING AND INFORMATION CONTAINED HEREIN ARE THE EXCLUSIVE PROPERTY OF EMERSON CLIMATE TECHNOLOGIES, INC. AND SHALL BE RETURNED UPON DEMAND AND SHALL NOT BE REPRODUCED IN WHOLE OR IN PART, DISCLOSED TO ANYONE ELSE OR USED, WITHOUT THE WRITTEN CONSENT OF EMERSON CLIMATE TECHNOLOGIES, INC.						
DRAWN BY			SUPERSEDES DWG. NO. / REV. NO.			
DATE			497-2548-00 / 63			
SCALE			DATE FORMAT:			
10-05-11			I:1 MM-DD-YY			
TITLE			DRAWING NUMBER SHEET 1 OF 3			
REF DWG - WELD COMP ASSM			497-3831-00-005			

SPECIFICATIONS	
ES NO.	DESCRIPTION
ES22-122	PACKAGING
ES81-159	CLEANLINESS
ES81-250	IDENTIFICATION
ES92-167	REGULATORY COMPLIANCE



SUCTION FITTING
0.753 I.D. MIN.
▽ 0.560 MIN
X 0.045 MIN WALL
COPPER PLATED
STEEL TUBE



MOLDED PLUG
CABLE ASSEMBLY
PER BILL OF MATERIAL

MOLDED PLUG CABLE ASSM
NOT SHOWN IN THIS VIEW
FOR CLARITY

GROUNDING SCREW
PER BILL OF MATERIAL

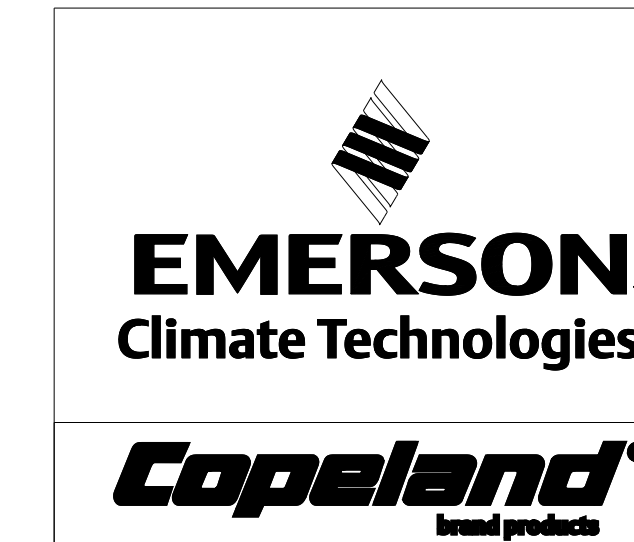
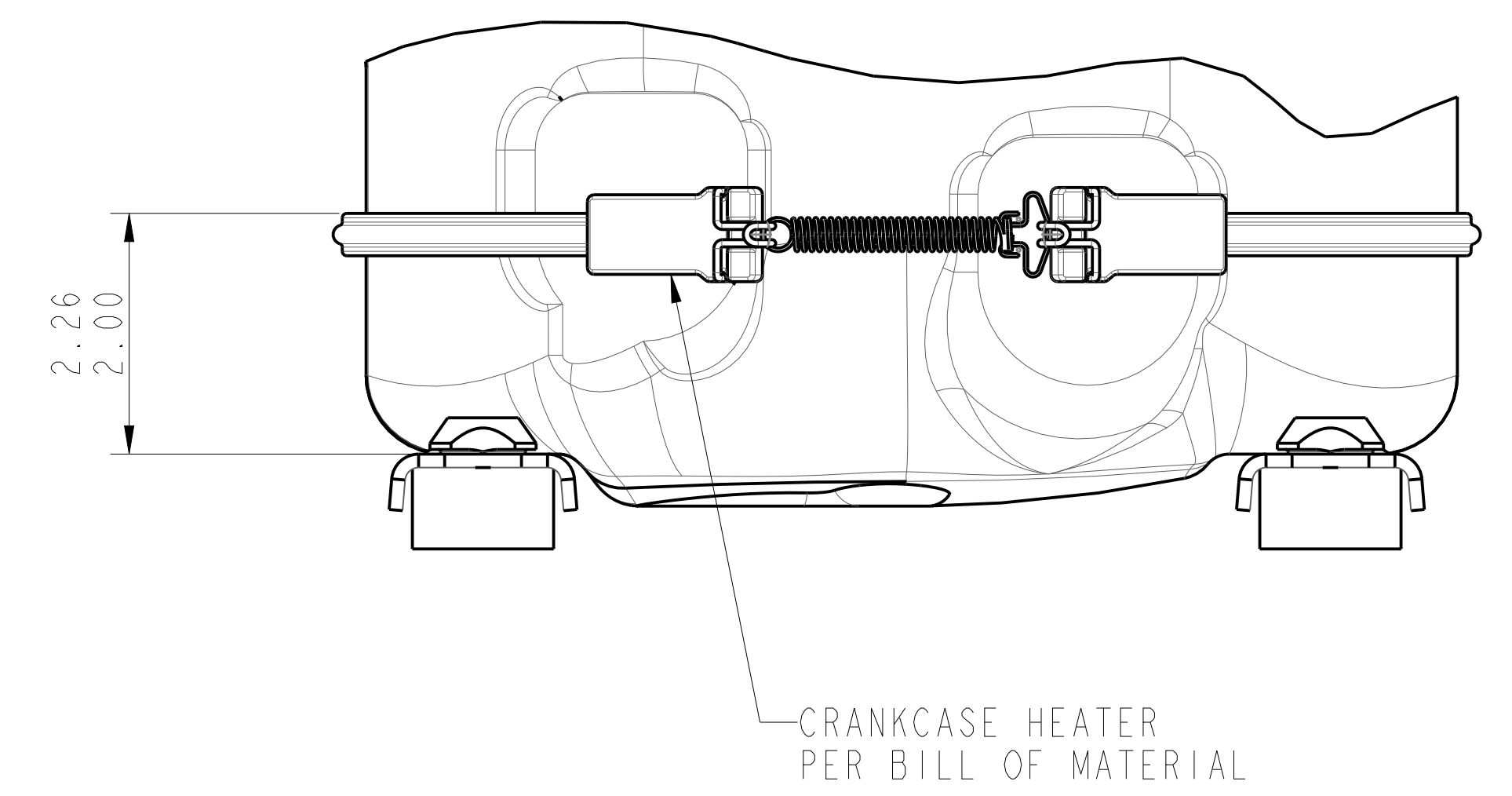
DISCHARGE FITTING
0.503 I.D. MIN
▽ 0.500 MIN
X 0.062 WALL
COPPER TUBE

SEE DETAIL A FOR
OPTIONAL DISCHARGE
SHT 3

FITTING OPTION SHOWN AS STANDARD:
0.75 ID STRAIGHT SUCTION (STANDARD)
0.50 ID X 0.63 OD ELBOW-UP DISCHARGE (STANDARD)

SEE SHEET 3 FOR FITTING KIT OPTIONS

CRK6 SERVICE MODELS ONLY



INTERPRET PER ASME
Y14.5M-1994 AND
EMERSON CLIMATE
TECHNOLOGIES, INC.
DESIGN STANDARDS DS2002
DO NOT SCALE DRAWING

CRITICAL PRODUCT
CHARACTERISTIC

THIRD ANGLE
PROJECTION

UNLESS OTHERWISE SPECIFIED
DIMENSIONS ARE INCH OR MILLIMETER

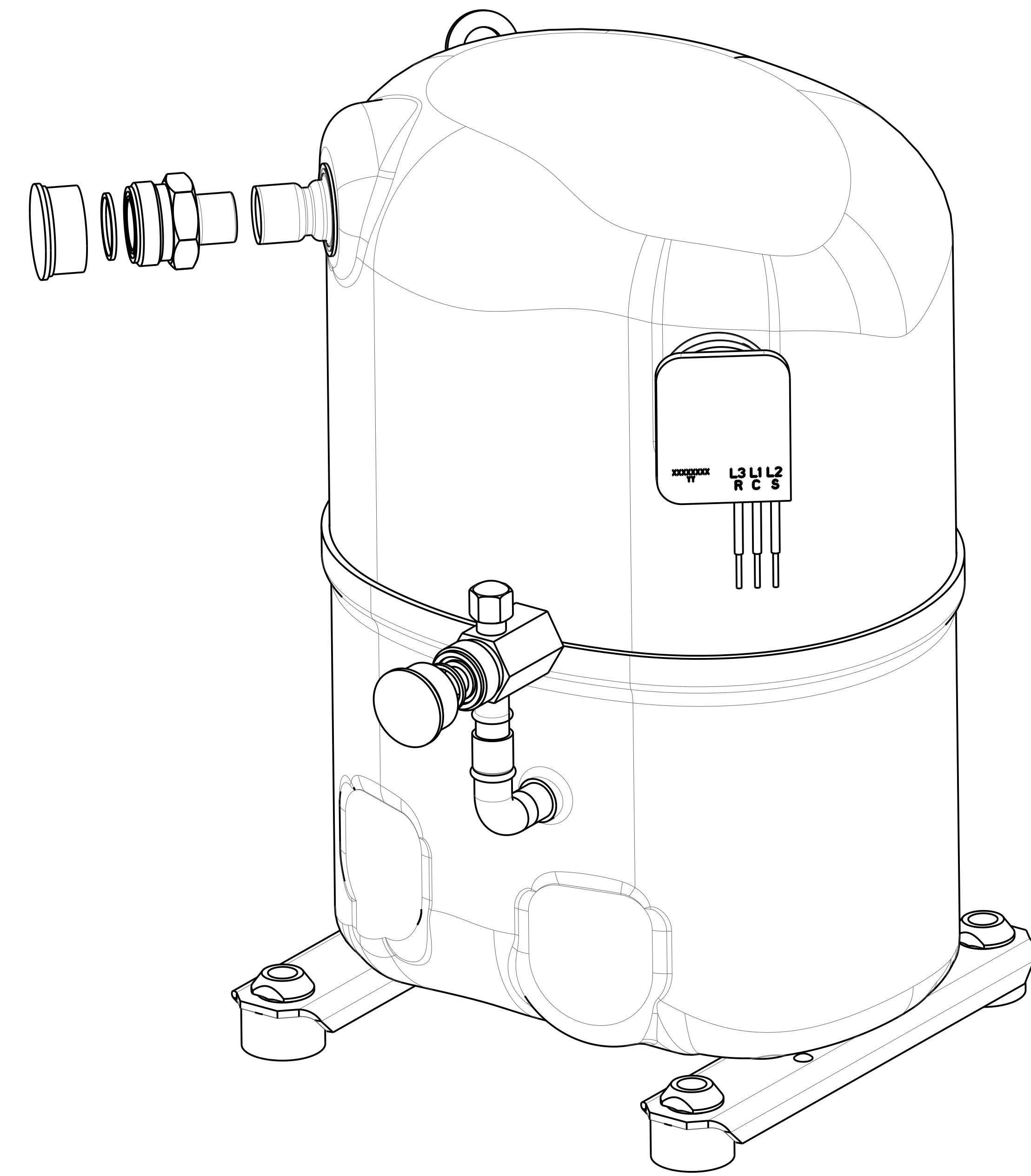
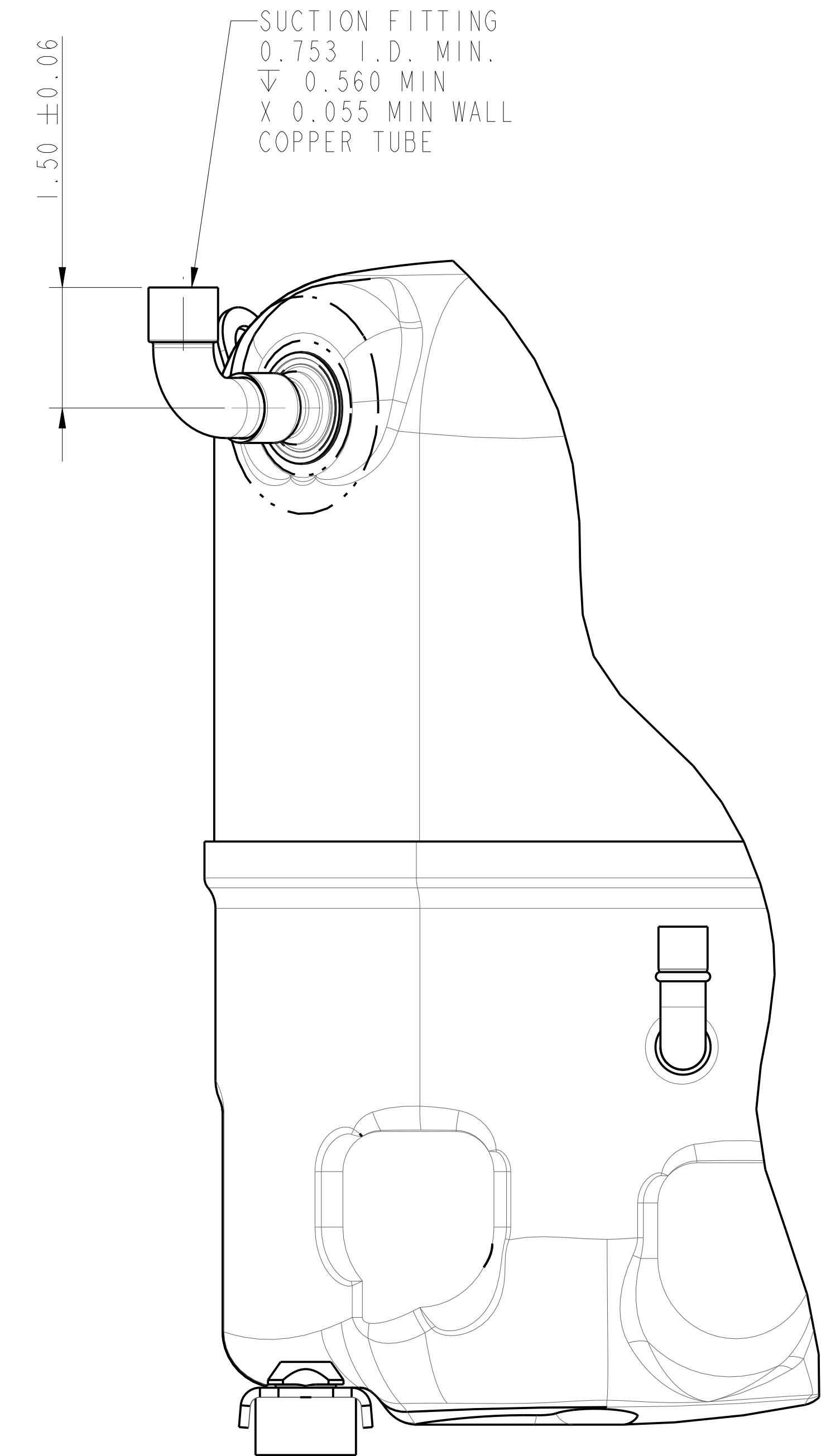
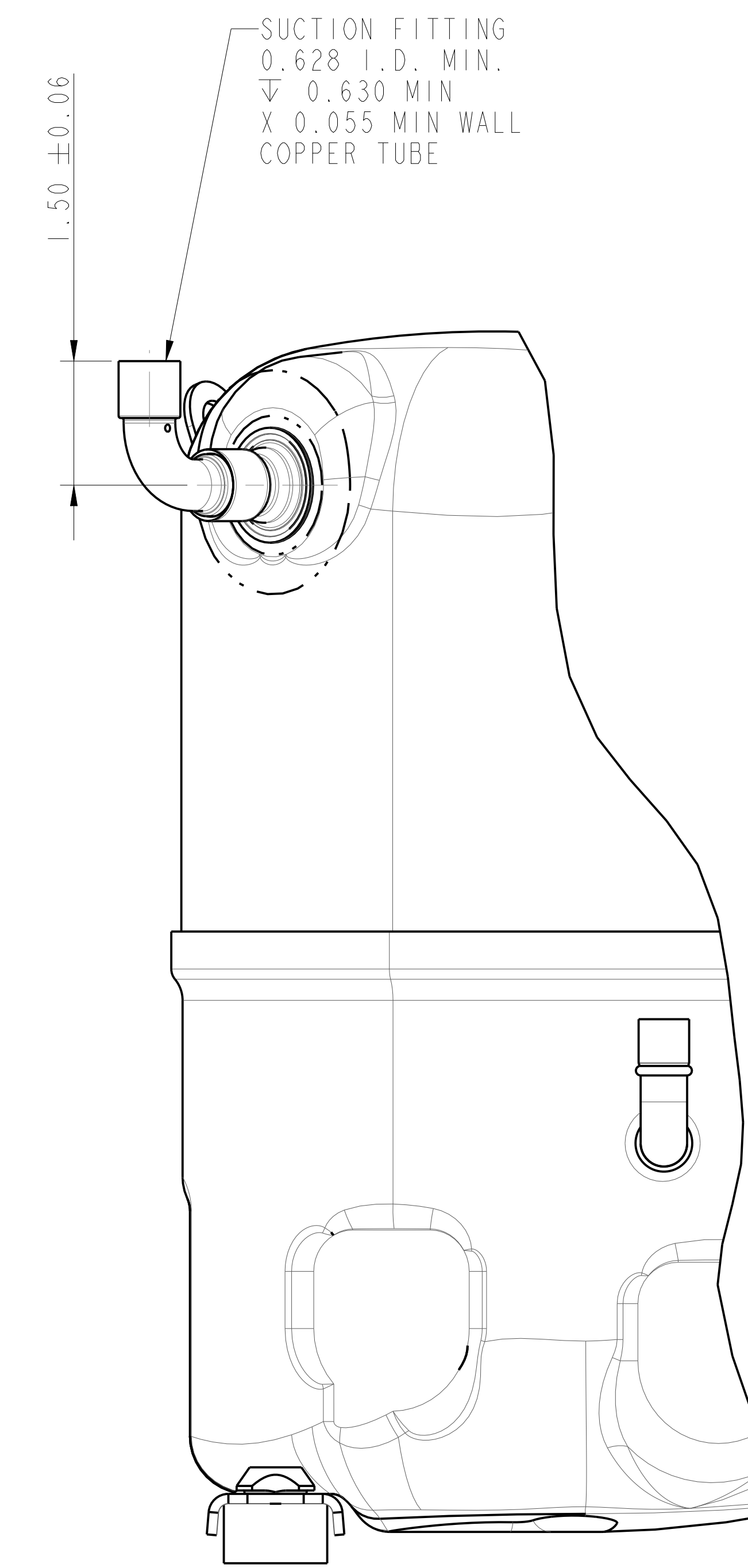
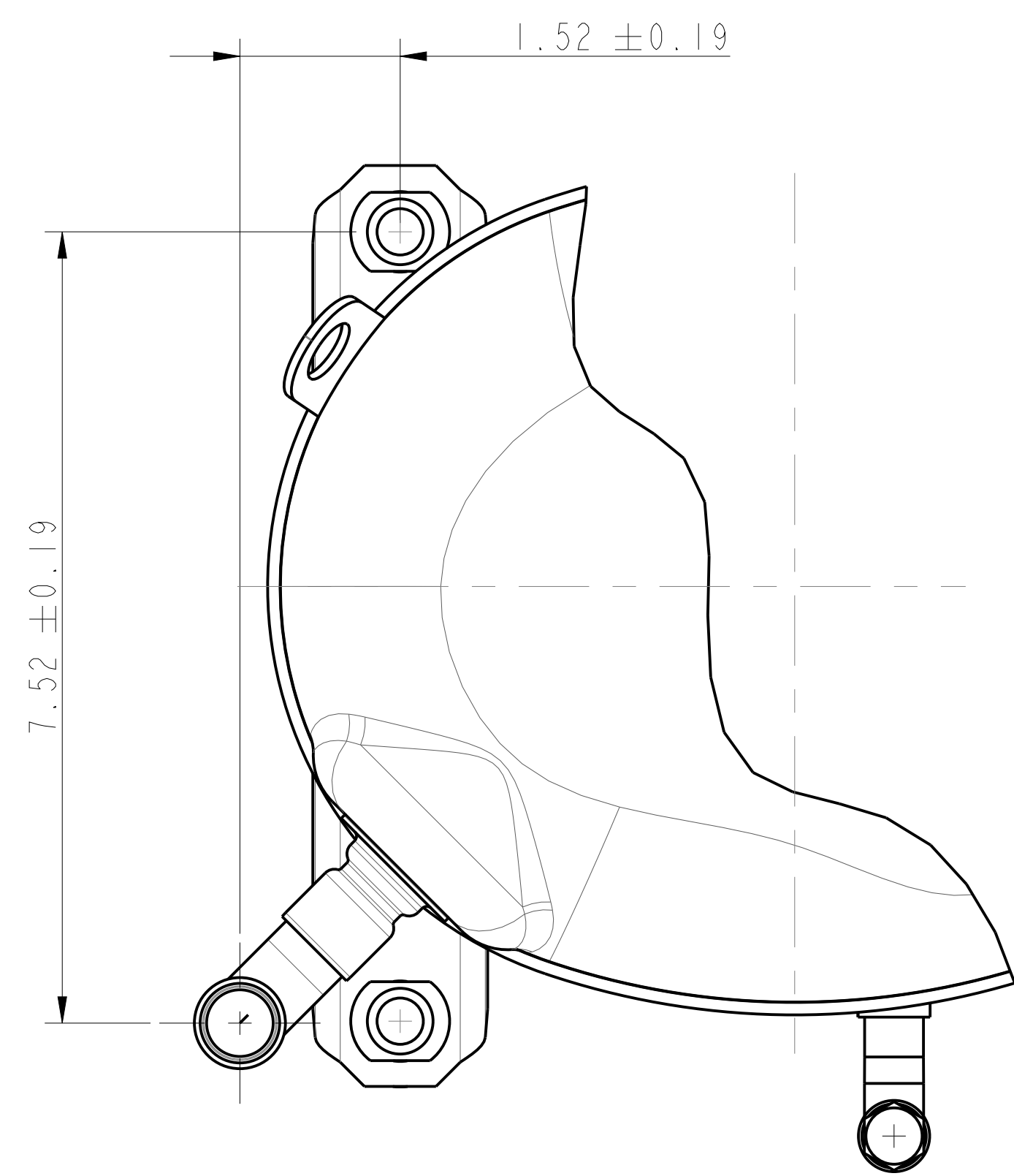
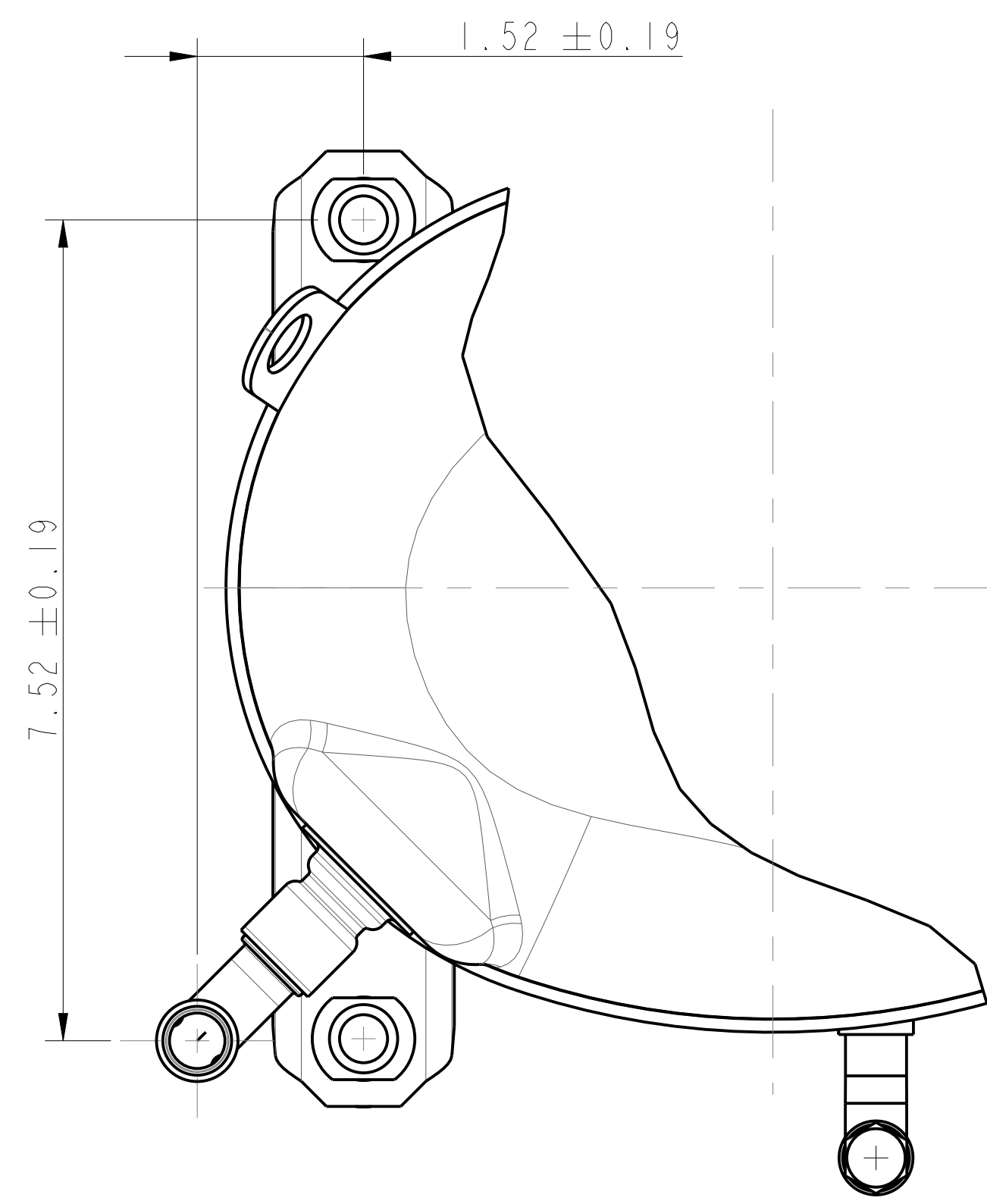
TOLERANCES:
2-PLACE ± N/A
3-PLACE ± N/A
ANGULAR ± N/A

ECN	REV. NO.	DESCRIPTION	DATE	BY	CHKD	APPR
ECN301692	5	SEE SHEET 1	04-10-17	SAS	BAH	EJT
ECN007772	4	SEE SHEET 1	11-15-13	PAS	BAH	EJT
ECN007772	3	SEE SHEET 1	10-24-13	PAS	BAH	EJT
ECN007040	2	SEE SHEET 1	04-16-13	PAS	BAH	EJT
ECN006139	1	SEE SHEET 1	08-28-12	AMJ	PNA	PNA
ECN004534	0	RELEASED	10-05-11	KRB	BAH	EJT

ENG NOTICE NO.	REV. NO.	REVISIONS	DATE	BY	CHKD	APPR
3		THIS DRAWING AND INFORMATION CONTAINED HEREIN ARE THE EXCLUSIVE PROPERTY OF EMERSON CLIMATE TECHNOLOGIES, INC. AND SHALL BE RETURNED UPON DEMAND AND SHALL NOT BE REPRODUCED IN WHOLE OR IN PART, DISCLOSED TO ANYONE ELSE OR USED, WITHOUT THE WRITTEN CONSENT OF EMERSON CLIMATE TECHNOLOGIES, INC.				

TITLE	DRAWN BY	DATE	SCALE	DATE FORMAT	MM-DD-YY	PAGE	OF	SIZE
REF DWG - WELD COMP ASSM	KRB	10-05-11	3:4	MM-DD-YY		2	OF 3	5

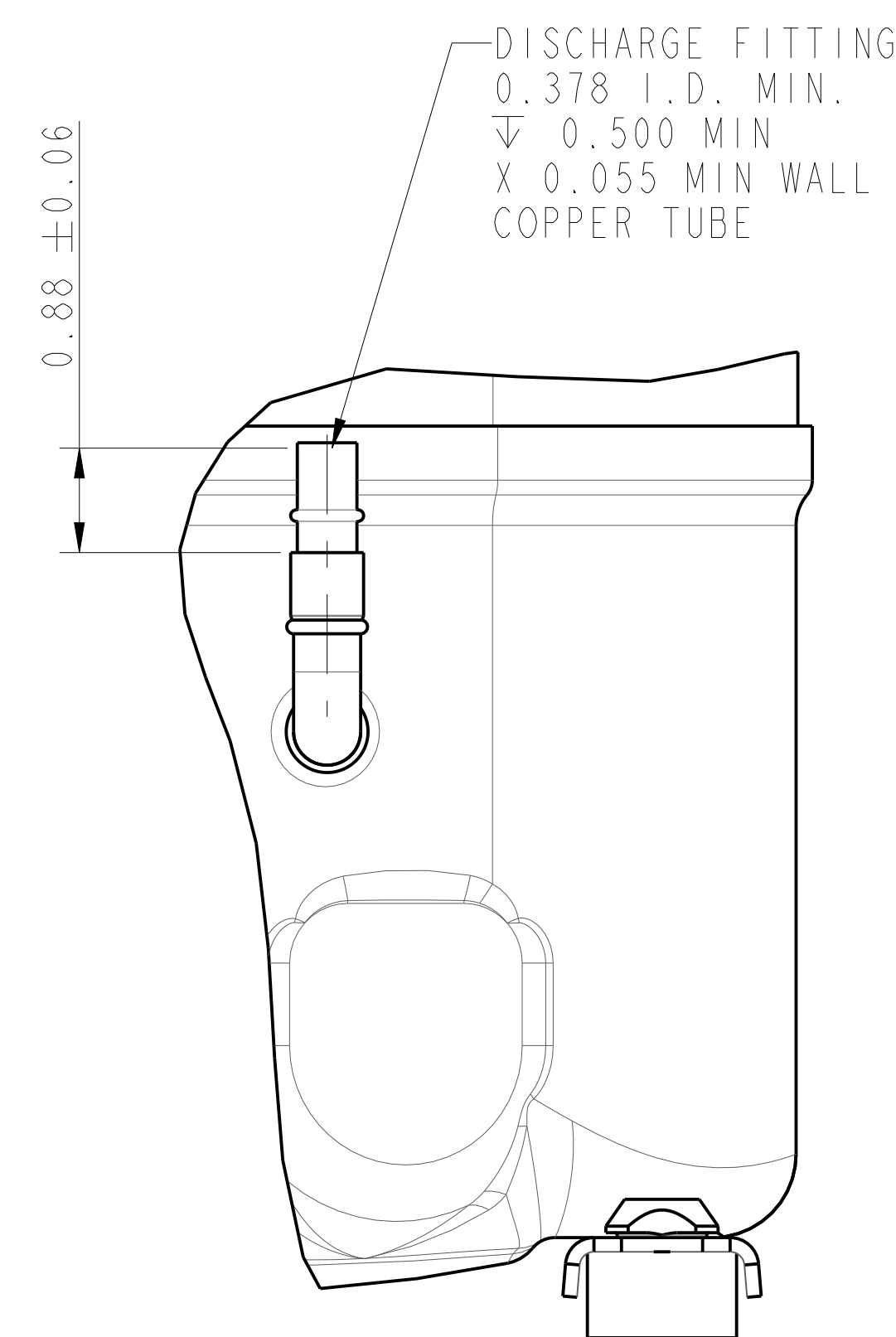
SPECIFICATIONS	
ES NO.	DESCRIPTION
ES22-122	PACKAGING
ES81-159	CLEANLINESS
ES81-250	IDENTIFICATION
ES92-167	REGULATORY COMPLIANCE



OPTION SHOWN:
 0.75 ID STRAIGHT SUCTION (STANDARD)
 0.50 ID X 0.63 OD ELBOW-UP DISCHARGE (STANDARD)
 WITH SERVICE ROTALOCK KIT
 998-0334-00 WHICH IS
 ORDERED SEPERATE OF MODEL

OPTION SHOWN:
 0.63 ID ELBOW-UP SUCTION
 0.50 ID X 0.63 OD ELBOW-UP DISCHARGE (STANDARD)

OPTION SHOWN:
 0.75 ID ELBOW-UP SUCTION
 0.50 ID X 0.63 OD ELBOW-UP DISCHARGE (STANDARD)



DETAIL A
 OPTION SHOWN:
 0.38 ID X 0.50 OD
 ELBOW-UP DISCHARGE

CRK6 SERVICE MODELS ONLY
 FITTING KIT OPTIONS



INTERPRET PER ASME
 Y14.5M-1994 AND
 EMERSON CLIMATE
 TECHNOLOGIES, INC.
 DESIGN STANDARDS DS2002
 DO NOT SCALE DRAWING

CRITICAL PRODUCT
 CHARACTERISTIC

THIRD ANGLE
 PROJECTION

UNLESS OTHERWISE SPECIFIED
 DIMENSIONS ARE INCH OR MILLIMETER

TOLERANCES:
 2-PLACE ± N/A
 3-PLACE ± N/A
 ANGULAR ± N/A

ECN	NO.	DESCRIPTION	DATE	BY	CHKD	APPR
ECN301692	5	SEE SHEET I	04-10-17	SAS	BAH	EJT
ECN007772	4	SEE SHEET I	11-15-13	PAS	BAH	EJT
ECN007772	3	SEE SHEET I	10-24-13	PAS	BAH	EJT
ECN007040	2	SEE SHEET I	04-16-13	PAS	BAH	EJT
ECN006139	1	SEE SHEET I	08-28-12	AMJ	PNA	PNA
ECN004534	0	RELEASED	10-05-11	KRB	BAH	EJT

ENG NOTICE NO.	REV. NO.	REVISIONS	DATE	BY	CHKD	APPR
3		THIS DRAWING AND INFORMATION CONTAINED HEREIN ARE THE EXCLUSIVE PROPERTY OF EMERSON CLIMATE TECHNOLOGIES, INC. AND SHALL BE RETURNED UPON DEMAND AND SHALL NOT BE REPRODUCED IN WHOLE OR IN PART, DISCLOSED TO ANYONE ELSE OR USED, WITHOUT THE WRITTEN CONSENT OF EMERSON CLIMATE TECHNOLOGIES, INC.				

CONFIDENTIALITY NOTICE	
DRAWN BY	SUPERSEDES DWG. NO. / REV. NO.
KRB	497-2548-00 / 63
DATE	SCALE
10-05-11	1:1
	DATE FORMAT: MM-DD-YY
TITLE	DRAWING NUMBER SHEET 3 OF 3
REF DWG - WELD COMP ASSM	497-3831-00-005