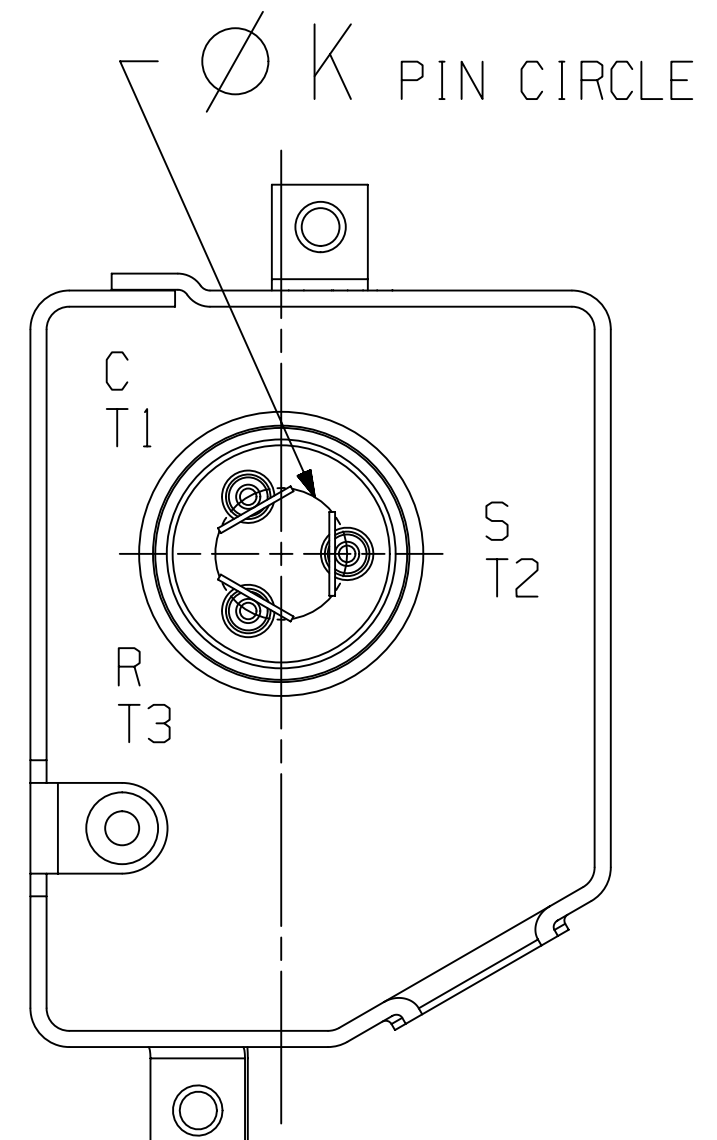


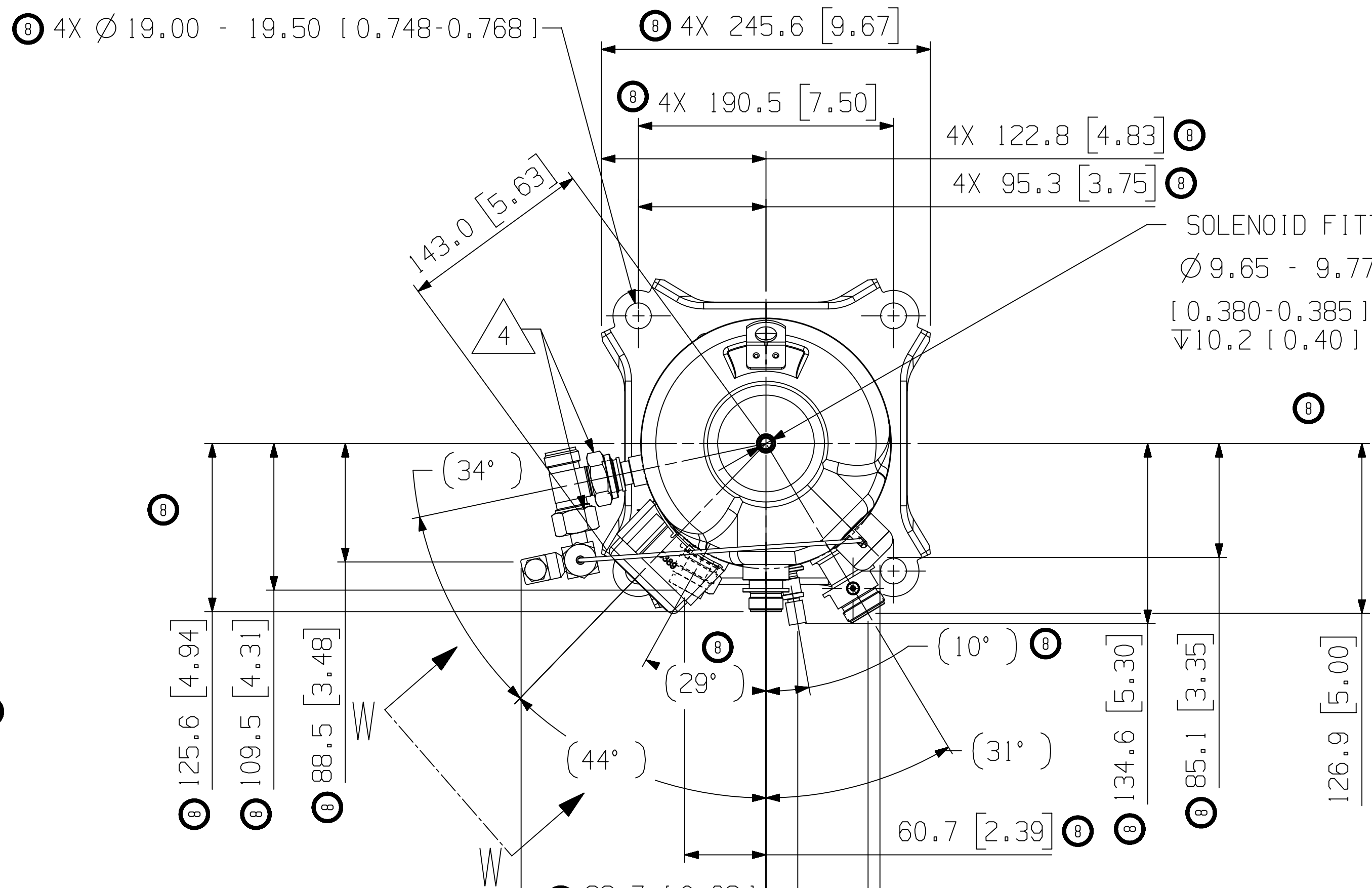
PART NUMBER	MODEL NUMBER	A	B	C	D	E	F	G	H
497-0477-00	ZFD13/18KVE ZFD13/18KVL	481.0 [18.94]	463.0 [18.23]	412.1 [16.22]	296.7 [11.68]	233.2 [9.18]	79.6 [3.13]	47.6 [1.87]	340.9 [13.42]

MOTOR TYPE	Ø K PIN CIRCLE
TF5	13.46 [0.530]
TFD TF7 TFE	17.45 [0.687]

SPECIFICATIONS	
ES NO.	DESCRIPTION
ES81-340	TORQUE
ES92-155	CONVERSION-METRIC



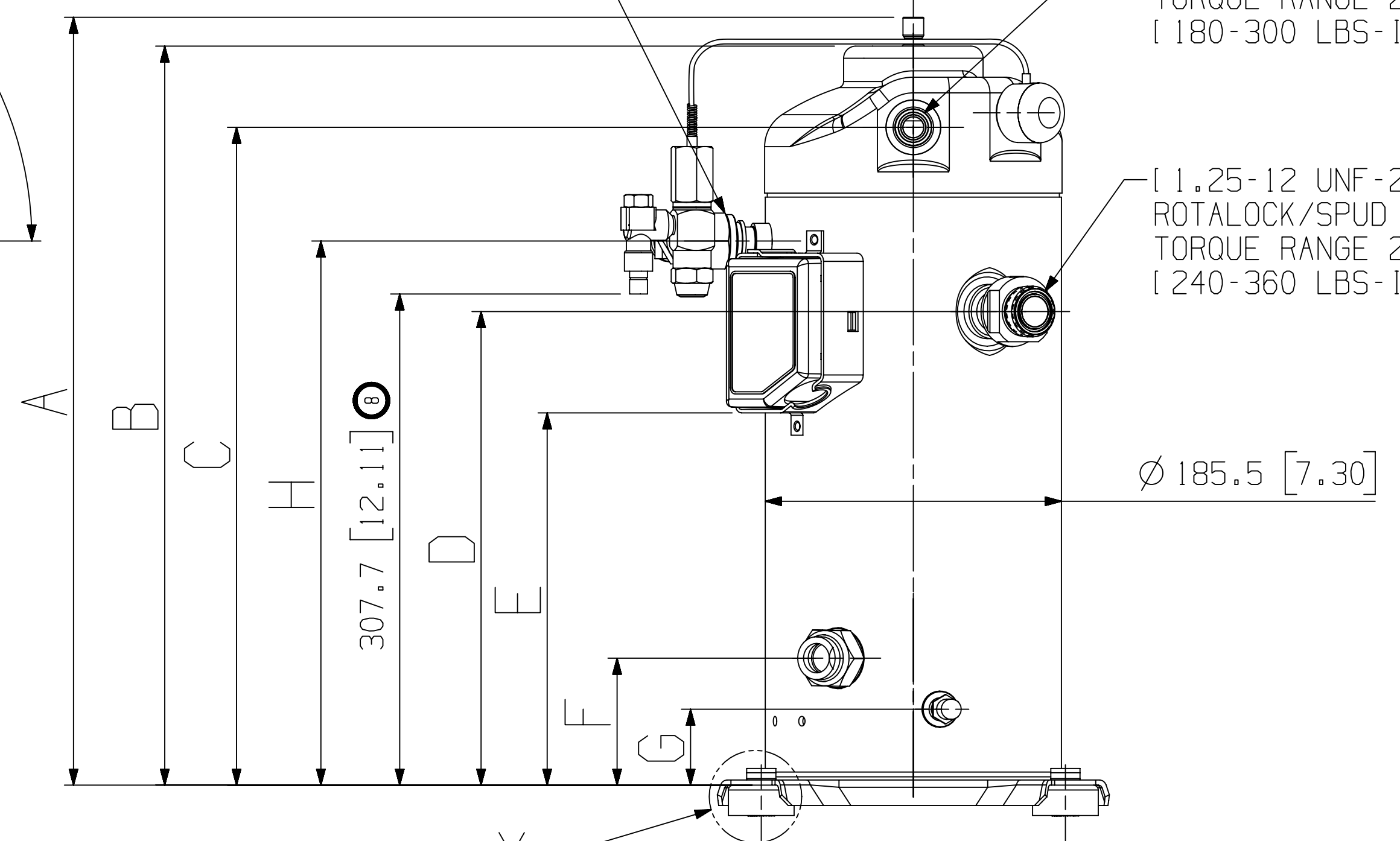
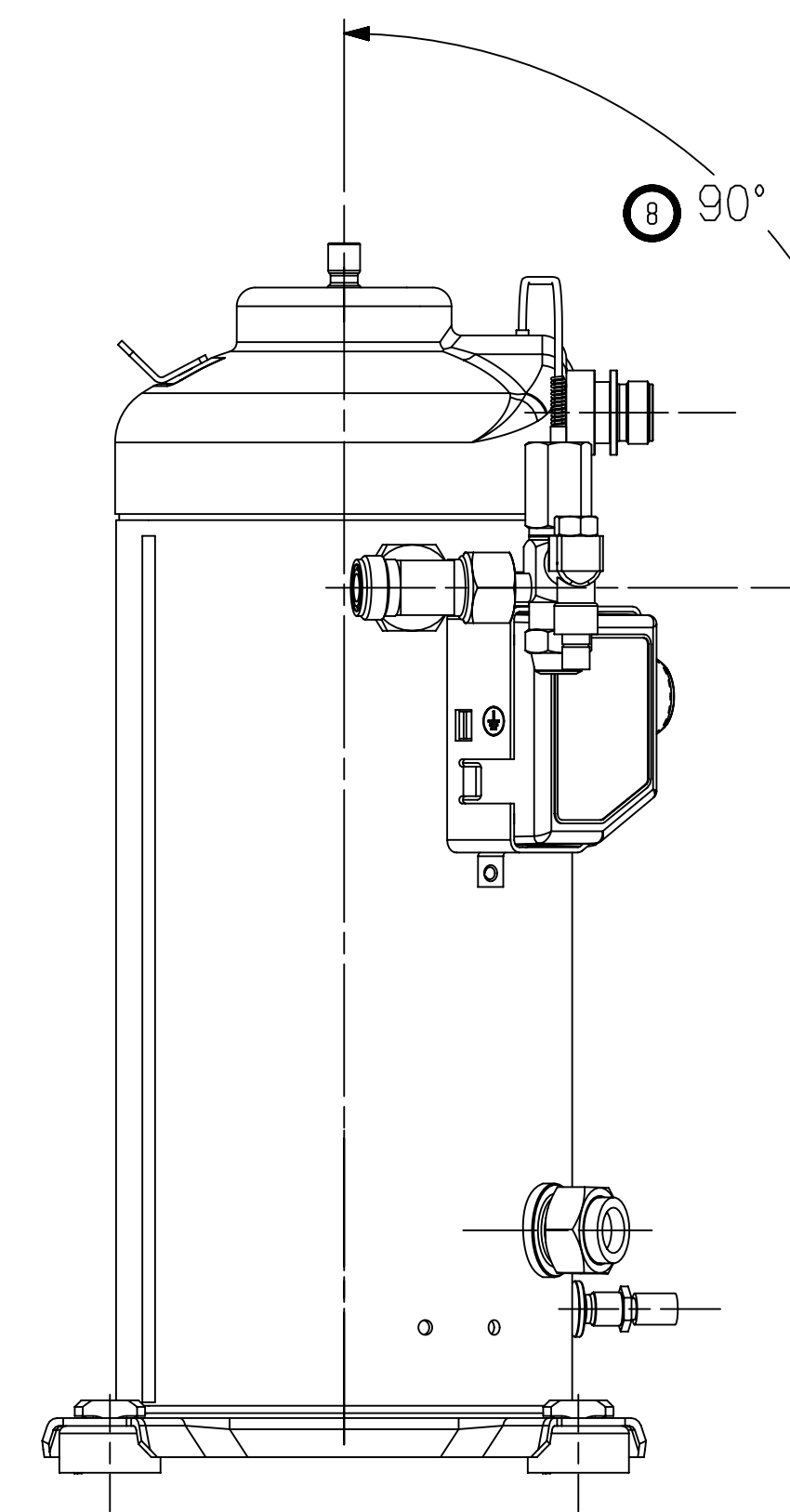
TERMINAL BOX LAYOUT OPTIONS  
TERMINAL BOX COVER NOT SHOWN  
VIEW W-W  
SCALE 1:1



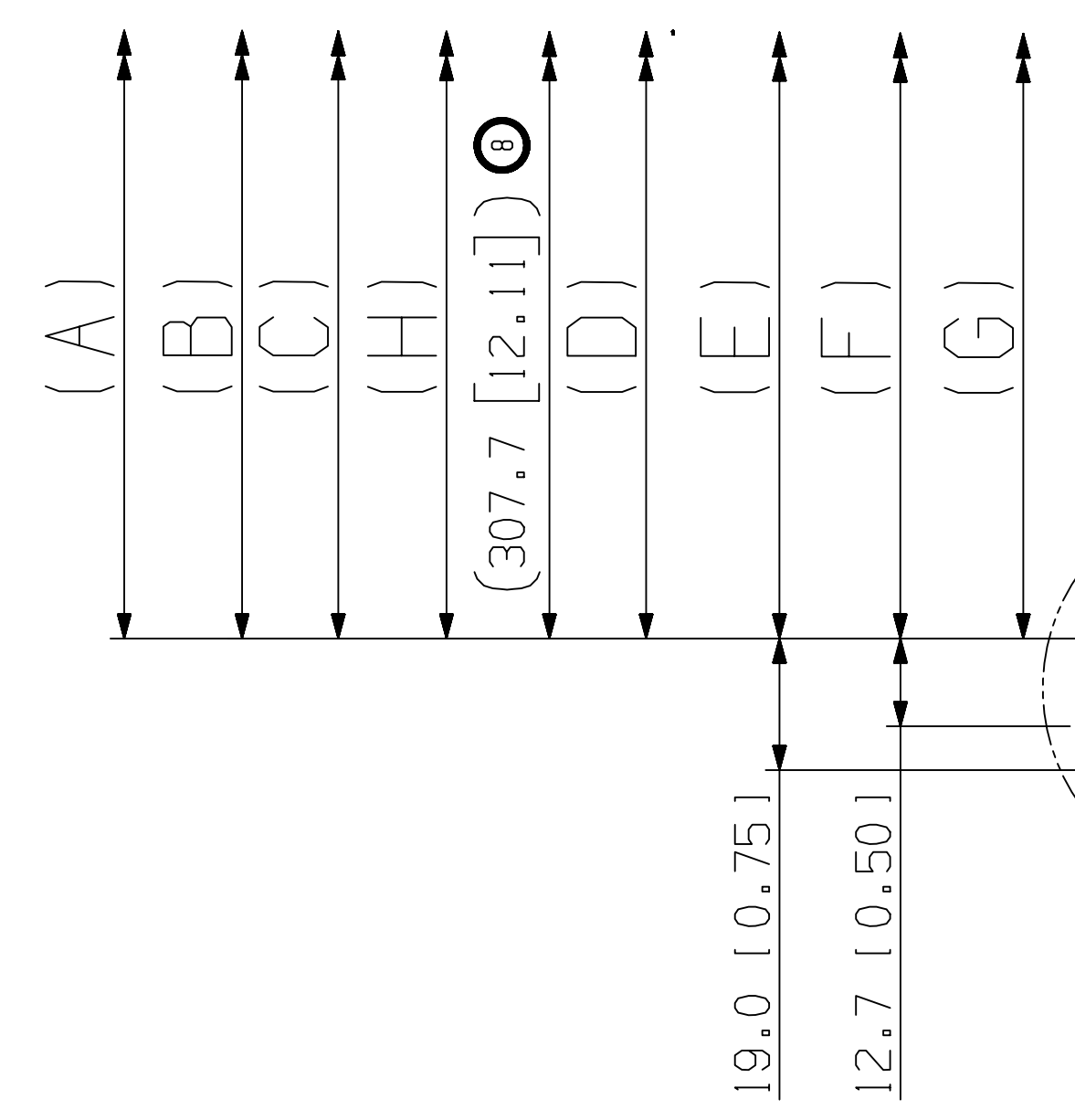
VAPOR INJECTION FITTING  
(BRAZED) [0.50 ID]  
OR  
VAPOR INJECTION FITTING  
(ROTALOCK)  
[1.00-14 UNS-2A] THREADS  
PER BILL OF MATERIAL

[1.00-14 UNS-2A] THREAD  
ROTALOCK/SPUD DISCHARGE  
TORQUE RANGE 20.3-33.9 N-M  
[180-300 LBS-IN]

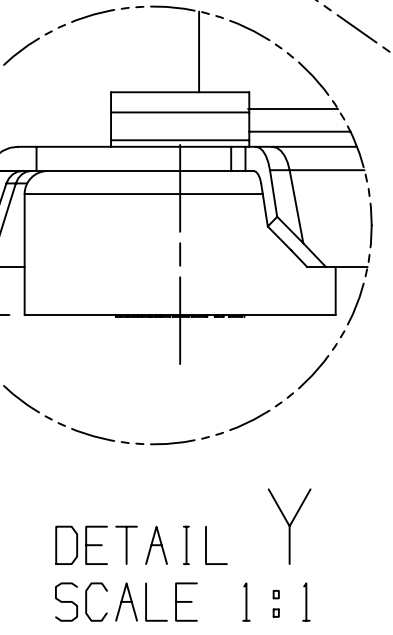
[1.25-12 UNF-2A] THREAD  
ROTALOCK/SPUD SUCTION  
TORQUE RANGE 27.1-40.7 N-M  
[240-360 LBS-IN]



DETAIL Y  
SCALE 1:1



USE COPPER CONDUCTORS ONLY. USE MINIMUM  
75° C WIRE FOR AMPACITY DETERMINATION.  
INTERNAL MOTOR PROTECTION - ALLOW TIME  
FOR RESET, OVERCURRENT PROTECTION  
DEVICE RATING AND TYPE MUST BE IN  
ACCORDANCE WITH REGULATORY AGENCY END  
PRODUCT APPROVALS-SEE SYSTEM NAMEPLATE.  
CRANKCASE HEATER, WHEN APPLIED,  
MUST BE CONNECTED ONLY TO ITS RATED  
VOLTAGE. TO CORRECT IMPROPER ROTATION  
OF THREE PHASE MODELS, SWITCH ANY  
TWO SUPPLY LINES. REFER TO THE  
APPLICABLE SYSTEM WIRING DIAGRAM.

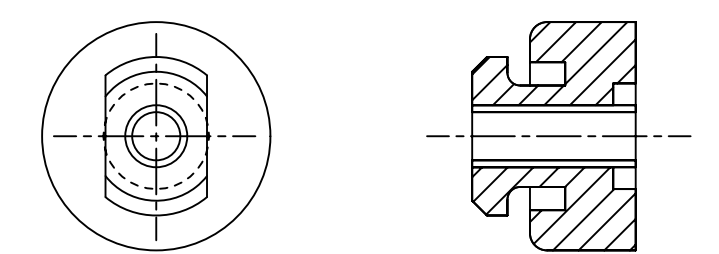


NOTES:  
1. ALL TOLERANCES ±1.50 [0.060]  
UNLESS OTHERWISE SPECIFIED.

DUE TO ACCUMULATED ASSEMBLY  
TOLERANCES THE LISTED COMPONENTS  
MAY VARY FROM THE MOUNTING HOLES  
AS SHOWN BELOW:

- 2. TUBE ENDS MUST BE PLUGGED.
- 3. MOUNTING KIT:

GROMMET DUROMETER	4 FOOT KIT
35-45	527-0116-00



TORQUE 29-34 N-M [260-300 IN-LB]

ECN300410	B	REDRAWN WITH CHANGES	05-04-17	OSP	PR1	BE
32-0205-016	O	RELEASED	04-19-06	YKN	DC	DC

CONFIDENTIALITY NOTICE					
THIS DRAWING AND INFORMATION CONTAINED HEREIN ARE THE EXCLUSIVE PROPERTY OF EMERSON CLIMATE TECHNOLOGIES, INC. AND SHALL BE RETURNED UPON DEMAND AND SHALL NOT BE REPRODUCED IN WHOLE OR IN PART DISCLOSED TO ANYONE ELSE OR USED, WITHOUT THE WRITTEN CONSENT OF EMERSON CLIMATE TECHNOLOGIES, INC.					
MATERIAL SPECIFICATION		DRAWN BY		SUPERSEDES DWG. NO. / REV. NO.	
N/A		OSP		497-0477-00/007	
		DATE		SCALE	
		05-04-17		3:8	
		DRAWING NUMBER		SHEET 1 OF 1	
TITLE		DRAWING NUMBER		SHEET 1 OF 1	
REF DWG-WELD COMP ASSM		497-0477-00		4	



INTERPRET PER ASME  
Y14.5M-1994 AND  
EMERSON CLIMATE  
TECHNOLOGIES, INC.  
DESIGN STANDARDS DS2002

DO NOT SCALE DRAWING

THIRD ANGLE  
PROJECTION

CRITICAL PRODUCT  
CHARACTERISTICS

UNLESS OTHERWISE SPECIFIED  
DIMENSIONS ARE MILLIMETER OR (1 INCH)

TOLERANCES:  
1-PLACE ±  
2-PLACE ±  
ANGULAR ± 0.5°