

Job Name:

System Reference:

Date:



ACCESSORIES

- Drain Socket.....PAC-SG61DS-E
- Optional Defrost Heater.....PAC-SJ20BH-E
- Drain Pan.....PAC-SH97DP-E
- Front Wind Baffle (One Piece).....WB-PA3
- Air Deflector Vertical.....ADV-1
- Air Outlet Guide (One Piece).....PAC-SH96SG-E
- Header Kit.....for details see Pipe Accessories Submittal
- Joint Kit.....for details see Pipe Accessories Submittal

*PUMY requires two outlet guides and two wind baffles for installation

Specifications			System
Unit Type			PUMY-HP36NKMU1
Cooling Capacity (Nominal)		BTU/H	36,000
Heating Capacity (Nominal)		BTU/H	42,000
Guaranteed Operating Range	Cooling ^{1,2}	°F [°C]	5~115 [-15.0~46.0]
	Heating	°F [°C]	-13~59 [-25.0~15.0]
External Dimensions (H x W x D)		In. [mm]	52-11/16 x 41-11/32 x 13+1 [1,338 x 1050 x 330+25]
Net Weight		Lbs. [kg]	278 [126]
External Finish			Galvanized sheets
Electrical Power Requirements	Voltage, Phase, Hertz, Power Tolerance		208/230V, 1-phase, 60 Hz,
Minimum Circuit Ampacity		A	36.0
Maximum Overcurrent Protection		A	44
Recommended Fuse Size		A	40
SCCR		kA	5
Refrigerant Piping Diameter	Liquid (High Pressure)	In. [mm]	3/8 [9.52] Flare
	Gas (Low Pressure)	In. [mm]	5/8 [15.88] Flare
Indoor Unit Connectable	Total Capacity		50.0~130.0% of outdoor unit capacity
	Model/Quantity		P04~P36/1.0~11.0
Sound Pressure Levels		dB(A)	49.0~53.0
FAN	Type x Quantity		Propeller fan x 2
	Fan Motor Output	kW	0.074 + 0.074 (two fan motors)
	Airflow Rate	CFM	3885
Compressor Operating Range		Cooling	29.0% to 100.0 %
		Heating	17.0% to 100.0%
Compressor	Type x Quantity		INVERTER-driven Scroll Hermetic x 1
Compressor Motor Output		kW	2.8
Refrigerant	Type x Original Charge		R410A x 10 lbs + 9.0 oz [4.8 kg]
Protection Devices	High Pressure Protection		High pressure sensor, High pressure switch 601 psi (4.15 MPa)
	Inverter Circuit (Comp./Fan)		Over-heat protection, Over-current protection
	Compressor		Discharge thermo protection, Over-current protection
Lubricant			FV50S (2.3 liters)
AHRI Ratings (Ducted/Non-ducted)	EER		12.6/15.0
	SEER		18.3/22.3
	COP		3.7/4.0
	HSPF		11.7/12.0
	ENERGY STAR® Certified		Yes/Yes

NOTES:

Cooling | Indoor: 81 ° F (27 ° C) DB / 66 ° F (19 ° C) WB; Outdoor: 95 ° F (35 ° C) DB

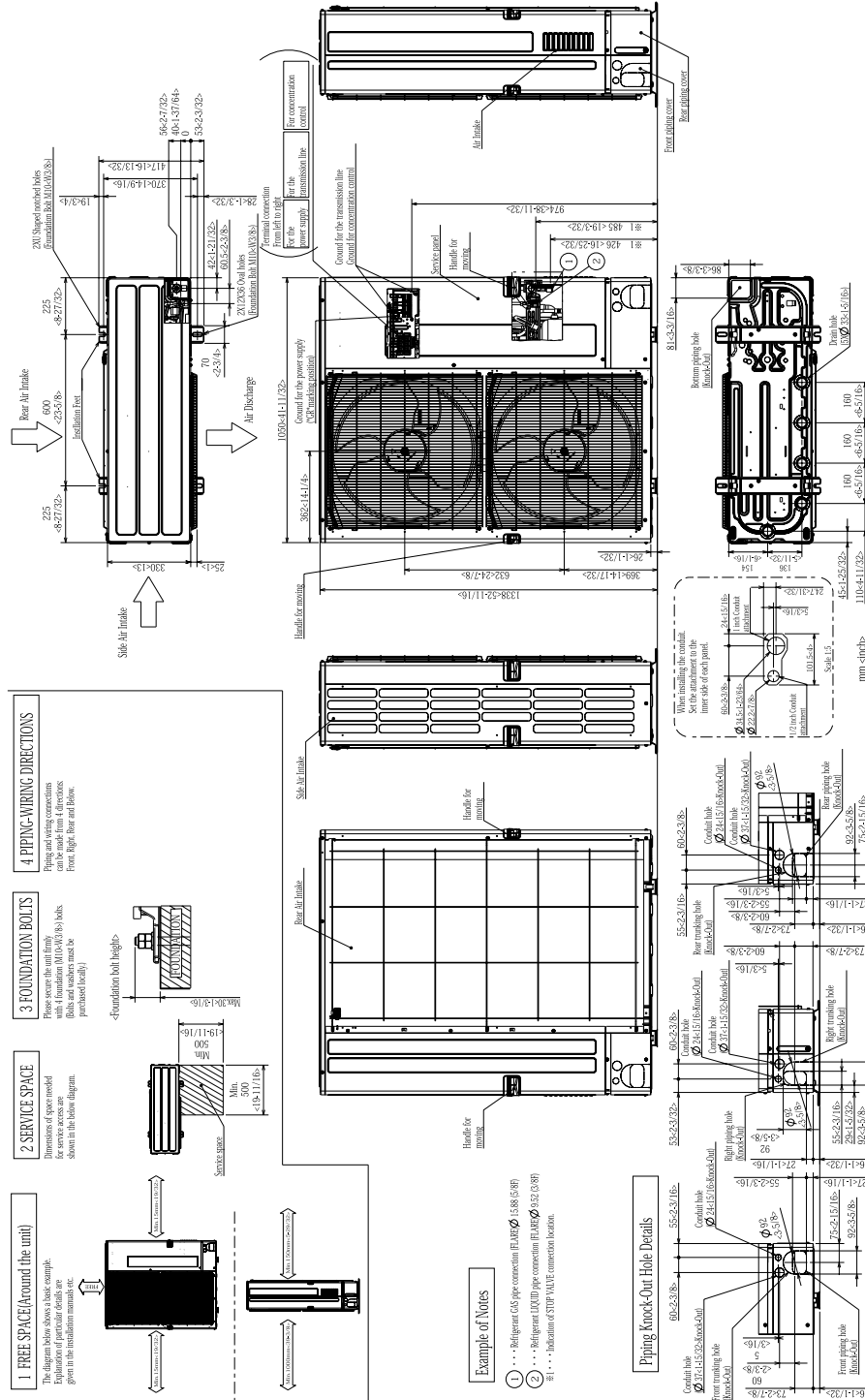
Heating | Indoor: 68° F (20° C) DB, Outdoor 45° F (7° C) DB / 43° F (6° C) WB

¹When using Wind Baffles [WB-PA3], the minimum operating range is 5° F. Without Wind Baffles, the minimum operating range is 23° F

²When connecting PKFY-P06NBMU/P08NHMU,PFY-P06/08/12NEMU or PFFY-P06/08/12NRMU indoor units, the minimum operating range is 50° F

DIMENSIONS: PUMY-HP36NKMU1

Unit: mm(in)



1340 Satellite Boulevard Suwanee, GA 30024
Toll Free: 800-433-4822 www.mehvac.com

