



Professional *Ultra*™ Hybrid Electric Heat Pump is the most efficient water heater available

Efficiency

- Up to 4.07 UEF reduces operating cost
- ENERGY STAR® rated
- Title 24 Compliant (JA13 Ready)

Performance

- Delivers hot water faster than most standard electric water heaters
- Ambient operating range: 37-145° F is widest in class, offering more days of HP operation annually; designed to meet Northern Climate Spec (Tier 4)

Easy Installation

- Easy access side connections
- Quick access to electrical junction box
- Easily replaces a standard electric water heater

Integration

- Electronic control for easy temperature adjustment and mode management
- Audible alarm for service alerts
- Integrated EcoNet® WiFi-connected* technology and free mobile app gives users control over water heater, allowing for customizable temperature, vacation settings, energy savings and system monitoring at home or away
- Demand Response Ready with built-in EcoPort/ CTA-2045 port
- **Easily add leak detection and prevention with the leak sensor and shut-off valve kit (part# SP21111 sold separately)**

Operation Modes

- Energy Saver
- Heat Pump
- High Demand
- Electric
- Vacation/Away: 2-28 days (or placed on hold indefinitely)

Plus...

- Premium grade anode rod with resistor extends the life of the tank
- 3/4" NPT water inlet and outlet; 3/4" condensate drain connections
- Incoloy stainless steel resistor elements
- Dry-fire protection
- Easy access, top mounted washable air filter
- 2" Non-CFC foam insulation
- Enhanced flow brass drain valve
- Temperature and pressure relief valve installed
- Design certified to NSF/ANSI 372 (Lead Content)

Warranty

- 10-Year limited tank and parts warranty
See Residential Warranty Certificate for complete information

Units meet or exceed ANSI requirements and have been tested according to D.O.E. procedures. Units meet or exceed the energy efficiency requirements of NAECA, ASHRAE standard 90, ICC Code and all state energy efficiency performance criteria.



Professional *Ultra* Hybrid Electric Heat Pump

40, 50, 65 and 80-Gallon Capacities

208-240 Volt / 1 PH Electric



LEED Points = 3

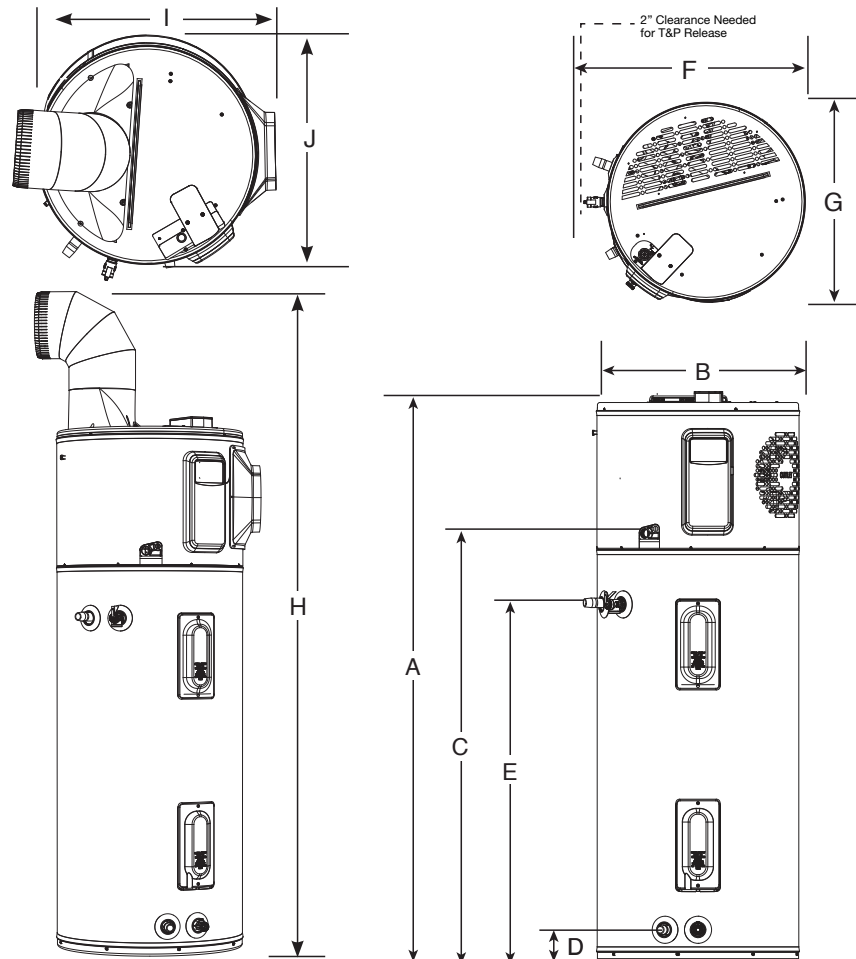
*WiFi broadband internet connection required.

See specifications chart on next page.

Professional *Ultra*™ Hybrid Electric Heat Pump Specifications

DESCRIPTION					ENERGY INFO	FEATURES						SHIPPING WEIGHTS	
NOMINAL GALLON CAPACITY	RATED GALLON CAPACITY	MODEL NUMBER	MODEL VARIANT	ELECTRIC BREAKER SIZE	UNIFORM ENERGY FACTOR (UEF)	COMPRESSOR BTU/H	UEF FIRST HR. RATING G.P.H.	RECOVERY IN G.P.H 90° F RISE	ELEMENT WATTAGE	TOTAL UNIT WATTAGE	MAX AMPS	UNIT WT. (LBS.)	APPROX. SHIP WT. (LBS.)
30 Amp without LeakGuard													
40	36	PROUH40 T2 RU375-30	700493	30	3.83	4,200	60	27	4,500	5,000	21	157	174
50	45	PROUH50 T2 RU375-30	700471	30	3.88	4,200	67	27	4,500	5,000	21	178	218
65	59	PROUH65 T2 RU375-30	700472	30	4.05	4,200	75	27	4,500	5,000	21	225	262
80	72	PROUH80 T2 RU375-30	700492	30	4.07	4,200	87	27	4,500	5,000	21	244	281
15 Amp without LeakGuard													
40	36	PROUH40 T2 RU375-15	700487	15	3.45	4,200	46	16	2,250	2,750	12	157	174
50	45	PROUH50 T2 RU375-15	700479	15	3.75	4,200	52	16	2,250	2,750	12	178	218
65	59	PROUH65 T2 RU375-15	700485	15	3.55	4,200	54	16	2,250	2,750	12	225	262
80	72	PROUH80 T2 RU375-15	700486	15	3.70	4,200	67	16	2,250	2,750	12	244	281

Uniform Energy Factor and rated gallon capacity based on Department of Energy (DOE) requirements. All units have integrated WiFi control board.

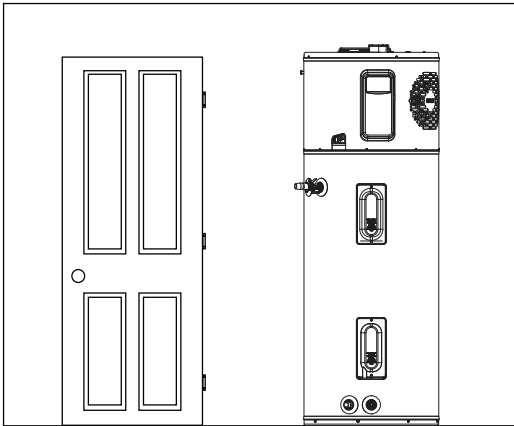


DESCRIPTION		DIMENSIONS (SHOWN IN INCHES)									
NOMINAL GALLON CAPACITY	MODEL NUMBER	A	B	C	D	E	F	G	H	I	J
40	PROUH40	62-5/16	20-1/4	47	3-5/8	39-5/8	23-3/8	20-1/2	78-7/8	22-3/8	23-1/4
50	PROUH50	61-3/4	22-1/4	47	3-5/8	39-5/8	25-3/8	22-1/2	78-5/8	24-3/8	25-9/16
65	PROUH65	64-3/16	24-1/4	49	3-7/8	42-3/8	27-1/2	24-5/8	81-1/8	26-1/2	27-3/8
80	PROUH80	74-3/16	24-1/4	59	3-7/8	42-3/8	27-1/2	24-5/8	91	26-1/2	27-3/8

Hybrid Electric Heat Pump Water Heater Installation Guidelines to Provide Optimal Efficiency

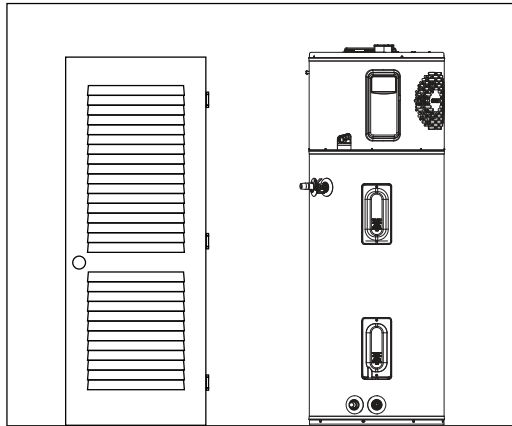
Heater: Not Ducted

Room size: Larger than 700 ft³ (e.g. 7' x 10' x 10').
 Requirements: No additional ventilation needed.



Heater: Not Ducted

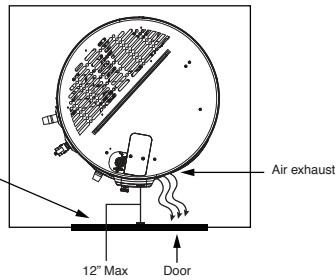
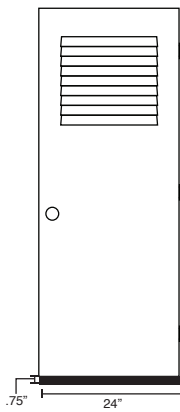
Room size: Smaller than 700 ft³ (e.g. 7' x 10' x 10').
 Requirements: Full louvered door OR two louvers top and bottom. See below.



Heater: Not ducted

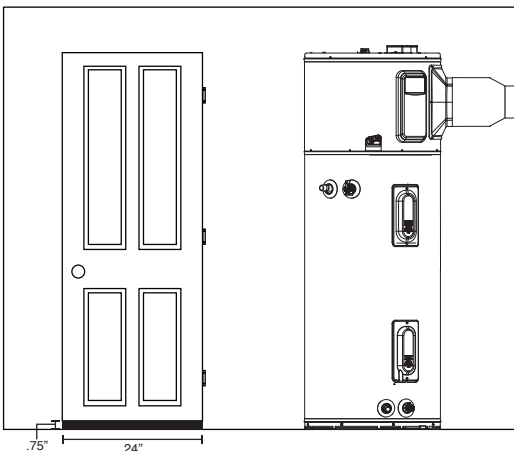
Room: Small Closet

- Requirements:
- * Air gap under door equal to 18 in² (0.75" clearance).
 - * Louver must be located the same height on door as the air exhaust on heater.
 - * Heater air exhaust must be positioned towards louver within one foot of door.



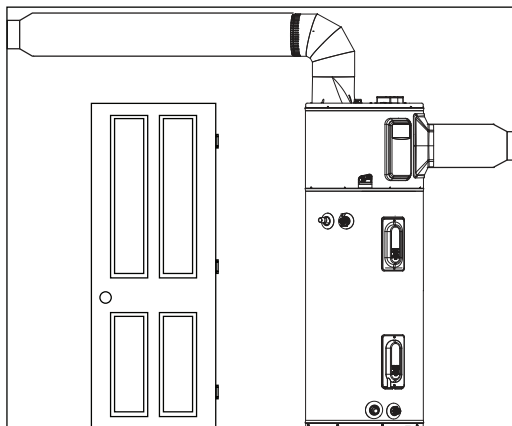
Heater: Ducted with inlet OR outlet duct

Room size: Any size room
 Requirements: Air gap under door equal to 18 in² (0.75" clearance)



Heater: Ducted with inlet AND outlet duct

Room size: Any size room
 Requirements: No additional ventilation needed.

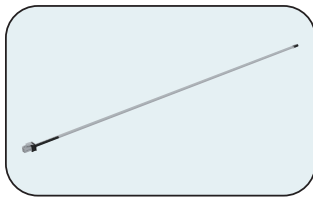




Hybrid Electric Heat Pump Water Heaters

Hybrid Electric Heat Pump Accessories List

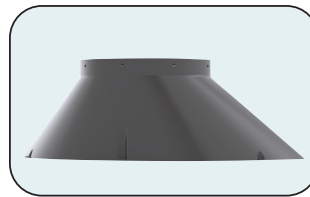
PART NUMBER	DESCRIPTION	USE FOR
AP19134	Leak Sensor	Automatic detection of internal and external leaks
AP20180	Shutoff Valve	Automatic shut off of water supply to unit
SP21105	Inlet Duct Adapter Kit	Allows for ducting to be connected on the top inlet
SP17829	Outlet Duct Adapter Kit	Allows for ducting to be connected to the unit
SP20882	Earthquake Isolation Kit	Installations in seismic regions
SP20883	Vibration Isolation Kit	Installation on non-concrete floors
SP20884	8" Diameter UL Certified Termination Kit	Termination to the outside or to the attic with 8" diameter
SP20885	7" Diameter UL Certified Termination Kit	Termination to the outside or to the attic with 7" diameter
SP20886	6" Diameter UL Certified Termination Kit	Termination to the outside or to the attic with 6" diameter
SP20887	5" Diameter UL Certified Termination Kit	Termination to the outside or to the attic with 5" diameter
SP20888	8" Rheem Approved Damper Kit	Exhaust only to the outside ducting configuration (no inlet duct)
SP20889	25' Flexible 8" Diameter Duct Kit	For up to 25' of ducting
SP20890	Rigid Elbow Duct Kit	Installation in tight places where space needs to be minimized
UPGRADE KIT		
SP21111	Leak Sensor & Shutoff Valve Kit	Add leak detector and shutoff valve to protect from water damage



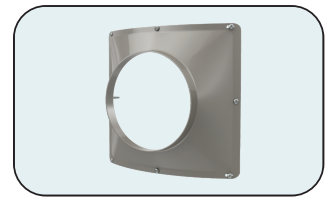
Leak Sensor



Shutoff Valve



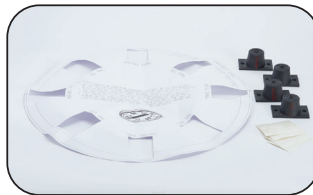
Inlet Duct Adapter Kit



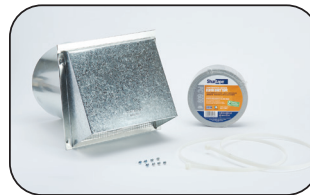
Outlet Duct Adapter Kit



Earthquake Isolation Kit



Vibration Isolation Kit



8" Diameter UL Certified Termination Kit



7" Diameter UL Certified Termination Kit



6" Diameter UL Certified Termination Kit



5" Diameter UL Certified Termination Kit



8" Ruud Approved Damper Kit

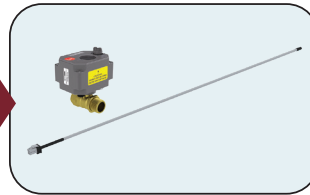


25' Flexible 8" Diameter Duct Kit



Rigid Elbow Duct Kit

UPGRADE KIT (for models without LeakGuard only) – Add leak detector and shutoff valve to protect from water damage



Leak Sensor & Shutoff Valve Kit

In keeping with its policy of continuous progress and product improvement, Ruud reserves the right to make changes without notice.