

# PT CHART

## SOLSTICE<sup>®</sup> N40

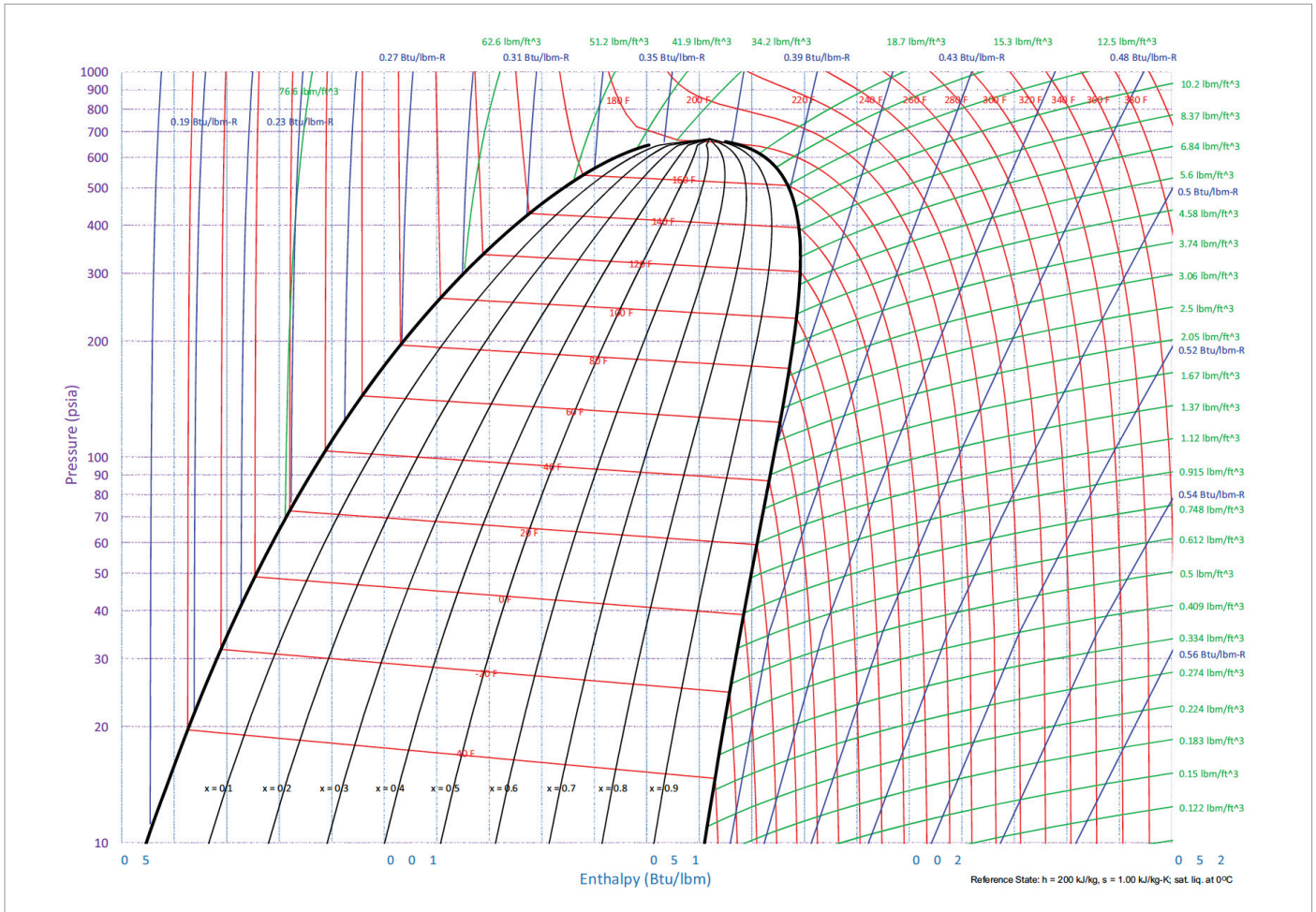
### (R-448A)

HONEYWELL PT CHARTS - R448A			
PRESSURE (PSIG)	TEMPERATURE (°F)		
	AVERAGE	BUBBLE	DEW
0.0	-45.5	-51.0	-39.9
1.0	-43.0	-48.6	-37.5
2.0	-40.7	-46.2	-35.2
3.0	-38.5	-44.0	-32.9
4.0	-36.3	-41.9	-30.8
5.0	-34.3	-39.8	-28.8
6.0	-32.3	-37.8	-26.9
7.0	-30.5	-35.9	-25.0
8.0	-28.6	-34.1	-23.2
9.0	-26.9	-32.4	-21.4
10.0	-25.2	-30.6	-19.7
11.0	-23.5	-29.0	-18.1
12.0	-21.9	-27.4	-16.5
13.0	-20.4	-25.8	-15.0
14.0	-18.9	-24.3	-13.5
16.0	-16.0	-21.4	-10.6
18.0	-13.2	-18.6	-7.8
20.0	-10.6	-16.0	-5.2
22.0	-8.1	-13.5	-2.7
24.0	-5.7	-11.0	-0.3
26.0	-3.4	-8.7	2.0
28.0	-1.1	-6.5	4.2
29.0	-0.1	-5.4	5.3
31.0	2.1	-3.3	7.4
34.0	5.1	-0.2	10.4
37.0	8.0	2.7	13.3
40.0	10.8	5.5	16.0
43.0	13.4	8.2	18.7

HONEYWELL PT CHARTS - R448A			
PRESSURE (PSIG)	TEMPERATURE (°F)		
	AVERAGE	BUBBLE	DEW
46.0	16.0	10.8	21.2
49.0	18.4	13.2	23.7
52.0	20.8	15.6	26.0
55.0	23.1	17.9	28.3
59.0	26.1	20.9	31.2
63.0	28.9	23.8	34.0
67.0	31.6	26.5	36.7
83.0	41.6	36.5	46.6
101.0	51.4	46.5	56.3
121.0	61.1	56.2	65.9
142.0	70.1	65.4	74.9
154.0	74.9	70.2	79.6
167.0	79.8	75.1	84.4
181.0	84.8	80.2	89.3
196.0	89.8	85.3	94.3
212.0	94.9	90.5	99.3
229.0	100.0	95.7	104.3
246.0	104.9	100.7	109.1
264.0	109.8	105.6	113.9
284.0	115.0	110.9	119.0
304.0	119.9	115.9	123.8
325.0	124.8	121.0	128.6
348.0	129.9	126.2	133.6
349.0	130.1	126.4	133.8
372.0	135.0	131.4	138.5
397.0	140.0	136.6	143.4
423.0	145.0	141.8	148.3
450.0	150.0	146.9	153.0



# PRESSURE AND ENTHALPY



Although Honeywell International Inc. believes that the information contained herein is accurate and reliable, it is presented without guarantee or responsibility of any kind and does not constitute any representation or warranty of Honeywell International Inc., either expressed or implied. A number of factors may affect the performance of any products used in conjunction with user's materials, such as other raw materials, application, formulation, environmental factors and manufacturing conditions among others, all of which must be taken into account by the user in producing or using the products. The user should not assume that all necessary data for the proper evaluation of these products are contained herein. Information provided herein does not relieve the user from the responsibility of carrying out its own tests and experiments, and the user assumes all risks and liabilities (including, but not limited to, risks relating to results, patent infringement, regulatory compliance and health, safety and environment) related to the use of the products and/or information contained herein.

Solstice® is a registered trademark of Honeywell International Inc.

For More Information visit  
[advancedmaterials.honeywell.com](https://advancedmaterials.honeywell.com)

**Honeywell Advanced Materials**  
 115 Tabor Road  
 Morris Plains, NJ 07950  
 800-631-8138

TCS-24-11-EN | 05/24  
 © 2024 Honeywell International Inc.

**THE  
 FUTURE  
 IS  
 WHAT  
 WE  
 MAKE IT**

