

EP-8000-101 Electro-Pneumatic Transducer Mounting Kit

When using the EP-8000-101 kit to mount an EP-8000 Series Electro-Pneumatic Transducer to a pneumatic valve actuator, the transducer must be mounted within 5° of vertical to avoid required recalibration. The EP-8000-101 kit can also be used for panel or wall mounting. The EP-8000-101 is a direct replacement for the EP-8000-100. The EP-8000-101 includes additional parts to mount to a wider variety of actuators. The EP-8000 should not be mounted directly to a damper actuator.

Note: All wiring to the transducer must be in accordance with applicable electrical code requirements, respecting the polarity labeled on the instrument terminal block.

Kit Includes

- one transducer mounting bracket
- one angle bracket
- one #10-24 x 15 mm angle bracket screw
- one M6 x 10 mm angle bracket screw
- one spacer, short, 0.38 in. (9.6 mm) for V-3000-8001
- one screw, #10-24 x 21 mm for V-3000-8001 with pilot positioner
- one M6 hex bolt (for V-400 and V-500)
- two M6 hex nuts (for V-400, V-500, and V-3000-8001 with pilot positioner)
- one screw, #8-32 x 34 mm (for V-3000-1)
- one spacer, long, 0.50 in. (12.7 mm) long for V-3000-1
- one set of installation instructions
- two mounting bracket nuts
- two mounting bracket screws
- four mounting bracket washers

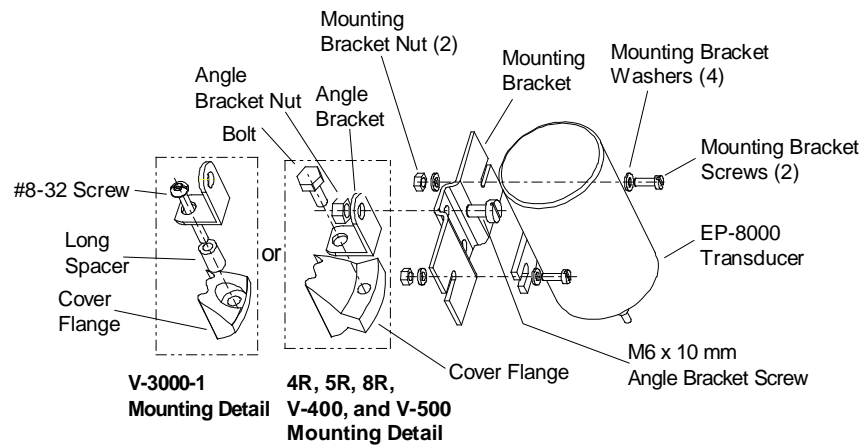


Figure 1: Mounting Detail for 4R, 5R, 8R, V-400, V-500, or V-3000-1 Pneumatic Actuators

Mounting On 4R, 5R, 8R, V-400, or V-500 Series Valve Actuators With or Without a V-9502 Valve Actuator Positioner (See Figure 1.)

1. Assemble the angle bracket, mounting bracket, and the EP-8000.
2. Remove one of the actuator cover fixing screws from the location where the EP-8000 will be mounted. Attach the angle bracket to the actuator in this location using the existing actuator bolt for the 4R, 5R, and 8R Actuators or the longer M6 bolt and nut required for the V-400 and V-500 Actuators.
3. Ensure that the EP-8000 is oriented within 5° of vertical.

Mounting On a V-3000-1 Series Valve Actuator With or Without a V-9502 Valve Actuator Positioner (See Figure 1.)

1. Assemble the angle bracket, mounting bracket, and the EP-8000.
2. Remove one of the V-3000-1 Actuator cover fixing screws from the location where the EP-8000 will be mounted. Attach the angle bracket of the EP-8000 bracket assembly to the actuator in this location using the long spacer and the long #8-32 x 34 mm screw, provided in the kit.
3. Ensure that the EP-8000 is oriented within 5° of vertical.

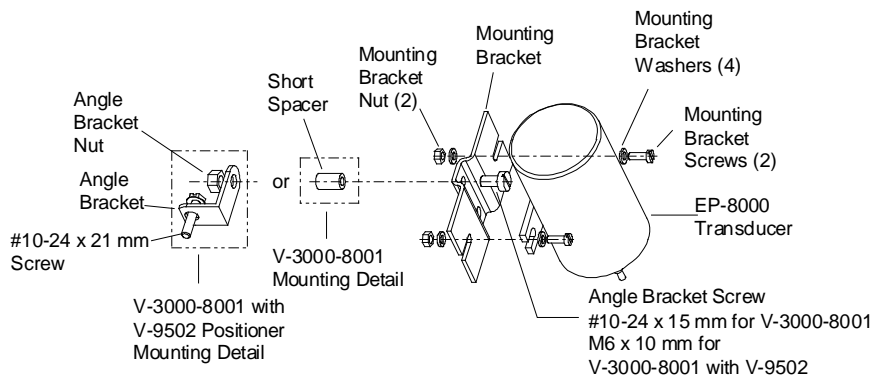


Figure 2: Mounting Detail for V-3000-8001 Actuators With or Without a V-9502 Positioner

Mounting On a V-3000-8001 Series Valve Actuator *Without* a V-9502 Valve Actuator Positioner (See Figure 2.)

1. Attach the mounting bracket to one of the holes in the side of the actuator yoke using the short spacer and the #10-24 x 15 mm angle bracket screw provided and assemble the EP-8000 to the mounting bracket.
2. Ensure that the EP-8000 is oriented within 5° of vertical.

! **CAUTION: Risk of Property Damage.** Make sure the proper length screw is used to connect the mounting bracket to the actuator yoke. The screw should not protrude completely through the yoke. If the screw protrudes through the yoke, it can interfere with the operation of the actuator or damage the diaphragm.

MISE EN GARDE : Risque de dégâts matériels. Assurez-vous d'utiliser la bonne longueur de vis pour fixer la patte de montage sur le bâti de l'actionneur. La vis ne doit pas traverser le bâti. Si la vis dépasse, elle peut gêner le fonctionnement de l'actionneur ou endommager la membrane.

Mounting On a V-3000-8001 Series Valve Actuator *With* a V-9502 Valve Actuator Positioner (See Figure 2.)

1. Assemble the angle bracket, mounting bracket, and the EP-8000.
2. Remove the lower screw attaching the V-9502 to the actuator yoke. Attach the angle bracket to the lower mounting screw hole of the V-9502 bracket assembly using the #10-24 x 21 mm screw provided.
3. Ensure that the EP-8000 is oriented within 5° of vertical.



CAUTION: Risk of Property Damage. Make sure the proper length screw is used to connect the mounting bracket to the actuator yoke. The screw should not protrude completely through the yoke. If the screw protrudes through the yoke, it can interfere with the operation of the actuator or damage the diaphragm.

MISE EN GARDE : Risque de dégâts matériels. Assurez-vous d'utiliser la bonne longueur de vis pour fixer la patte de montage sur le bâti de l'actionneur. La vis ne doit pas traverser le bâti. Si la vis dépasse, elle peut gêner le fonctionnement de l'actionneur ou endommager la membrane.

Wall or Panel Mounting (See Figures 3 and 4.)

The EP-8000 can also be mounted to an existing permanent structure (i.e., wall, panel, etc.) with or without the brackets in this kit using the appropriate fasteners (**field furnished**).

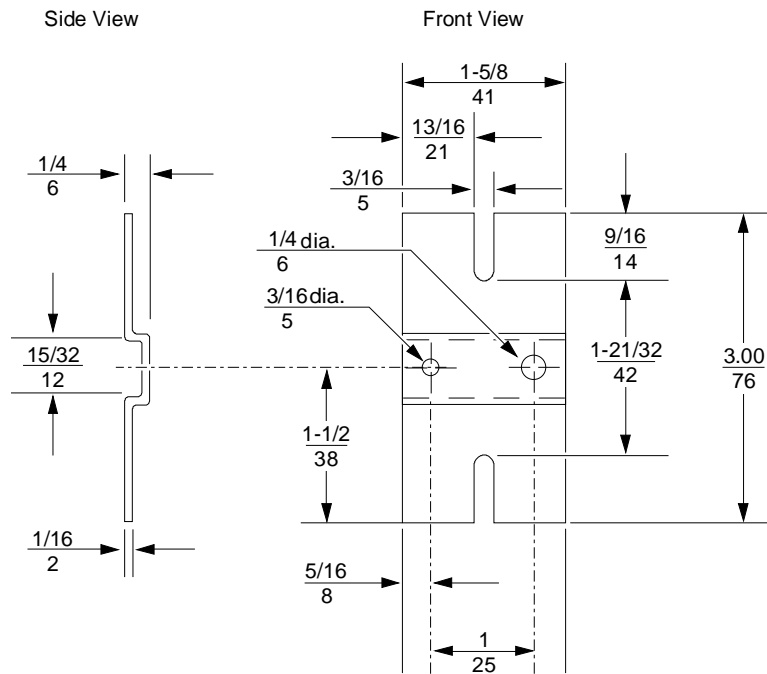


Figure 3: Transducer Mounting Bracket Dimensions, in./mm

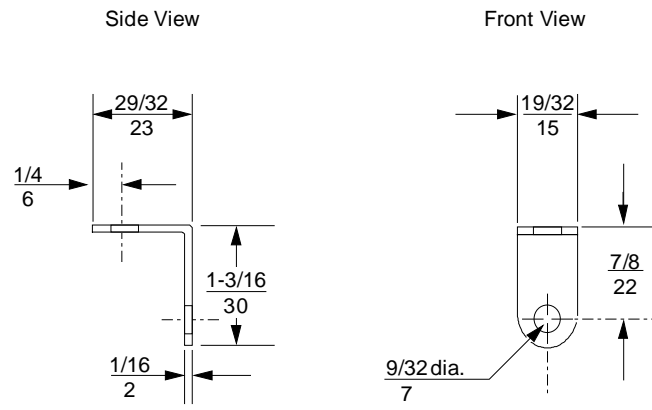


Figure 4: Angle Bracket Dimensions, in./mm