

Job Name/Location:

Tag No.:

Date:

For:	File	Resubmit
	Approval	Other_____

PO No.:

Architect: GC:

Engr: Mech:

Rep:

(Company)

(Project Manager)



**PTVK430**  
 Flange  
 For 4-Way Ceiling Cassettes Indoor Units



**Features:**

- For use with TR, TQ, TP, TN, TM, and TA 4-Way Ceiling Cassettes.
- Easy to install.

**Unit Data:**

Size (inches)	4
Net Weight (lbs.)	0.11
Shipping Weight (lbs.)	2.2

**Insulation Properties:**

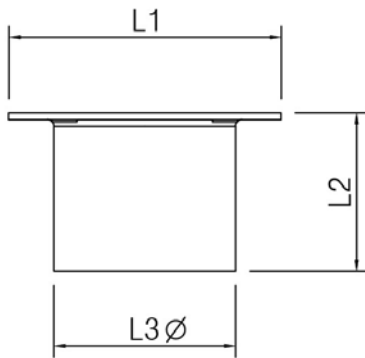
Material	Plastic Resin
----------	---------------

**Entering Mixed Air:**

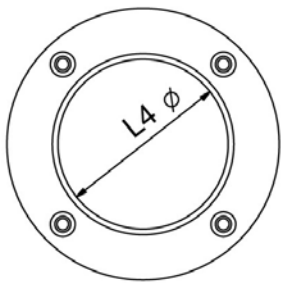
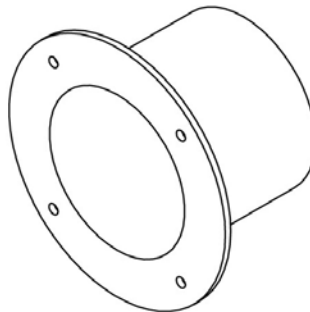
Cooling Maximum (°F W.B.)	76
Heating Minimum (°F D.B.)	59

**Note:**

Follow installation instructions in the applicable LG installation manual.

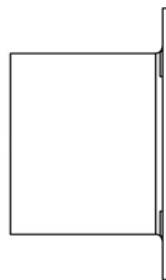


Top View



Front View

Air Inlet →



L1	4 3/4"
L2	2 3/4"
L3	3 1/8"
L4	2 15/16"

Job Name/Location: \_\_\_\_\_

**PTVK430**

Flange

For 4-Way Ceiling Cassettes Indoor Units



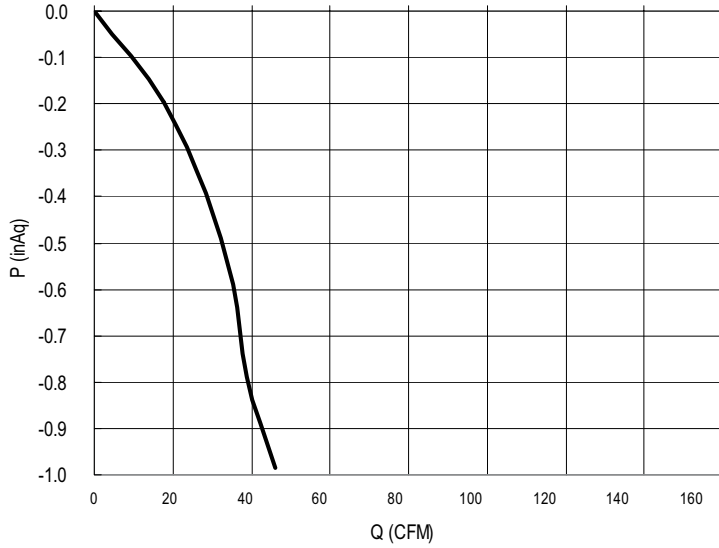
Tag No.: \_\_\_\_\_

Date: \_\_\_\_\_

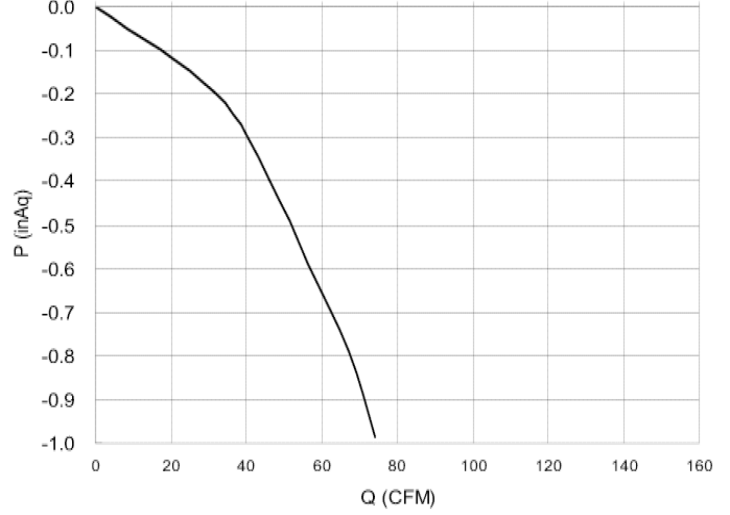
PO No.: \_\_\_\_\_

**Airflow Capacity Versus Static Pressure:**

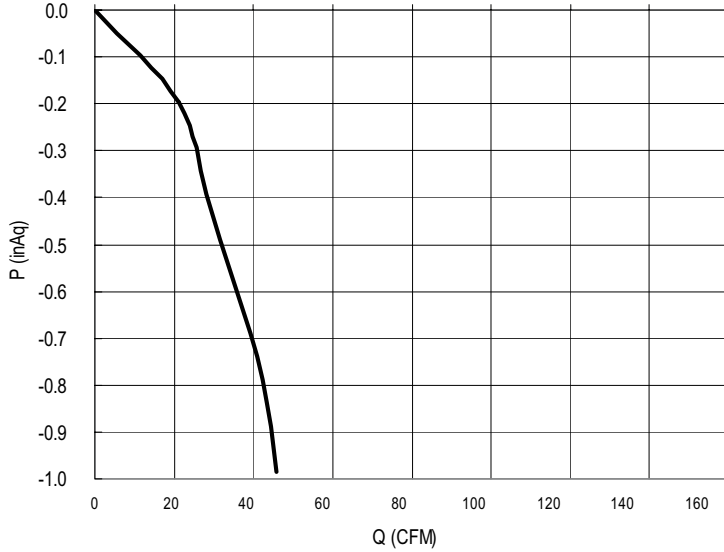
**TR Frame Outside Air Ventilation with PTVK430**



**TP-TN-TM Frame Outside Air Ventilation with PTVK430**



**TQ Frame Outside Air Ventilation with PTVK430**



**TA Frame Outside Air Ventilation with PTVK430**

